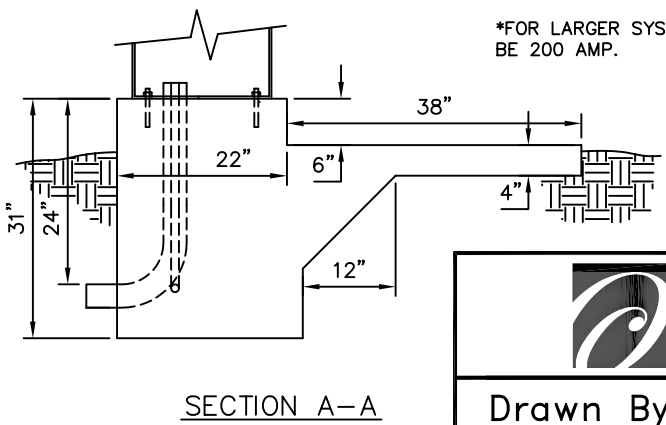
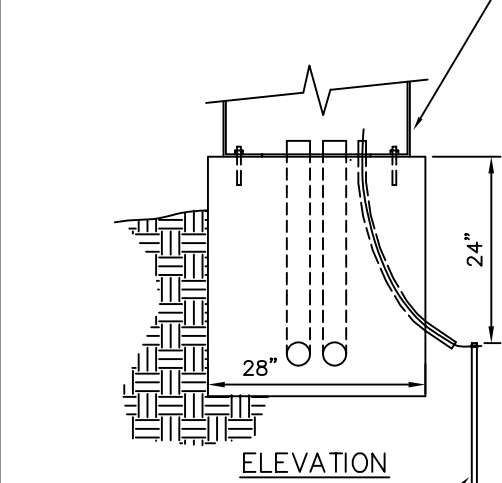
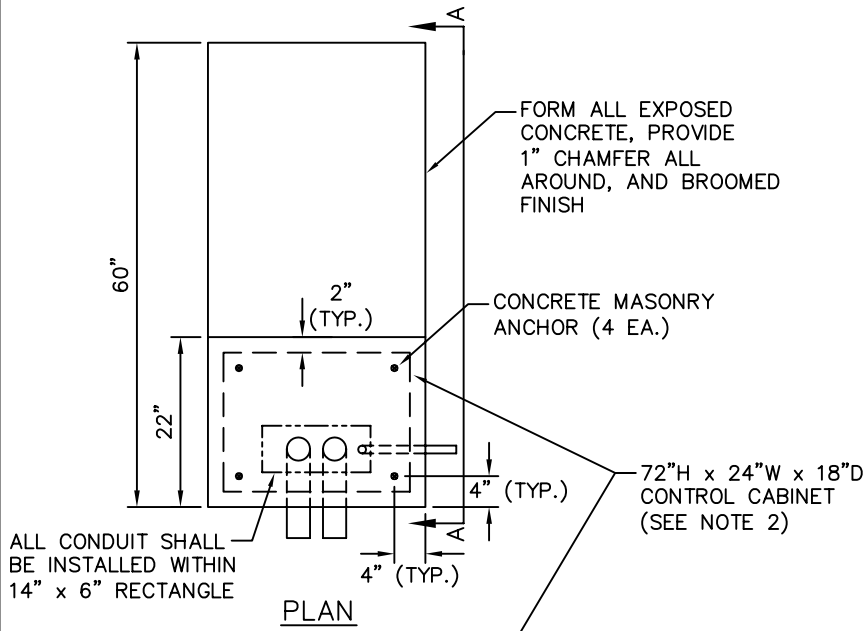



GENERAL NOTES:

1. THE CONTROLLER (SERVICE AND CONTROL CABINET) SHALL PROVIDE 480-VOLT POWER FOR UP TO FOUR LIGHTING CIRCUITS OF UP TO 30 LIGHTS EACH. PRIOR TO CONTROLLER BEING PUT INTO SERVICE, IT MUST PASS INSPECTION BY THE CITY ENGINEERING DEPARTMENT AT (414) 768-5859 AND THE CITY ELECTRICAL INSPECTOR AT (414) 768-6546.
2. THE CONTROLLER CABINET SHALL BE A 72"H X 24"W X 18"D NEMA 4 ENCLOSURE, SAGINAW CONTROL AND ENGINEERING MODEL NO. SCE-72EL2418FS, OR APPROVED EQUAL.
3. CONTROLL CABINET SHALL BE CONSTRUCTED UPON A CONCRETE BASE WITH MAINTENANCE PLAD AS DEPICTED ON THIS DETAIL DRAWING. ALL CONDUIT RUNS THROUGH THE CONCRETE BASE SHALL EXTEND ABOUT 2" OUT THE TOP OF THE BASE AND ABOUT 4" OUT THE SIDES OF THE BASE. CABINET TO BE SECURED TO THE CONCRETE BASE WITH FOUR CONCRETE MASONRY ANCHORS, MINIMUM 1/2" DIAMETER AND 5" IN LENGTH.
4. THE ENCLOSURE SHALL BE GRAY IN COLOR, WITH AN ADHESIVE IDENTIFICATION TAG (DETAIL DRAWING SL-1), AND SHALL HAVE AN ACCESS HANDLE WITH LOCKING MECHANISM (I.E. LOCK HASP) TO ALLOW THE CITY TO INSTALL ITS OWN PAD LOCK. IN ADDITION TO THE CONCRETE BASE AND ENCLOSURE, COMPONENTS AND RELATED WORK FOR THE CONTROLLER SHALL INCLUDE BUT MAY NOT BE LIMITED BY THE FOLLOWING:
  - A. 200 AMP\*, 4-TERMINAL METER PEDESTAL (MILBANK MODEL NO. U3358-0-KK, OR APPROVED EQUAL)
  - B. 480-VOLT, 1-PHASE, 3-WIRE PANELBOARD INTERIOR
  - C. 100 AMP\*, 2-POLE MAIN DISCONNECT (CIRCUIT BREAKER TYPE)
  - D. 60 AMP, 4-POLE ELECTRICALLY HELD CONTACTOR, 120V COIL
  - E. 480V TO 120V TRANSFORMER TO PROVIDE FOR THE CONTROL VOLTAGE, 1 KVA
  - F. SWIVEL MOUNTING PHOTO EYE
  - G. ON/OFF/AUTO SWITCH
  - H. PULL-CHAIN INTERIOR CABINET LIGHT WITH 60-WATT BULB AND STANDARD G.F.I. OUTLET
  - I. TWO 3-INCH PVC CABLE DUCTS AND ONE 1-INCH PVC GROUND WIRE DUCT
  - J. #4 AWG WIRING
  - K. TWO (2) GROUND RODS WITH NO. 4 WIRE, SPACED AT LEAST 6' APART
  - L. 40 AMP CIRCUIT BREAKERS

\*FOR LARGER SYSTEMS AND DEPENDING ON CALCULATED PROPOSED LOAD THIS MAY NEED TO BE 200 AMP.



 <p><i>City of Oak Creek</i> <i>Department of Public Works</i></p>	
Drawn By: M. SIMMONS	Scale: NONE
Appv. By: W. ST. JOHN	1/9/04
<b>STREET LIGHTING - CONTROL CABINET &amp; BASE</b>	
<b>SL-2</b>	

TWO 5/8" x 8'-0" COPPERWELD GROUND RODS W/ #4 AWG BARE GROUNDING WIRE, SPACED AT LEAST 6' APART