

Oak Creek City Newsletter

Acorn



Oak Creek Recreation Guide

Winter/Spring
2005

Photograph:
Ice skating at
Henry Miller
Pond

INSIDE THIS ISSUE:

The Mayor's Desk	Pg. 2	City Administrator's Office	Pg. 3
Acorn City Newsletter	Pg. 2-18	Recreation Guide-Table of Contents	Pg. 20
Community Educ Programs	Pg. 19	Recreation Made Easy (Procedures)	Pg. 42
City Celebrations	Pg. 2	Recreation Registration Forms	Pg. 43,45
Facilities List & Maps	Pg. 14-15	City Calendar	Pg. 17

RECREATION GUIDE BEGINS ON PAGE 20

THE MAYOR'S DESK-DICK BOLENDER



Dear Oak Creek Residents,

Summer finally arrived – better late than never - and now the fall and winter seasons are upon us, along with the busy holidays.

To help kick off the holiday season, the annual community Christmas tree lighting ceremony was held November 28th. The tree in front of City Hall on Howell Ave. is now designated the “official” City Christmas tree to be lit each holiday season. Watch it grow each year!

Oak Creek’s Henry Miller Park at 315 E. Groveland Drive will be open, weather permitting, for ice skating this winter. For further information on City celebrations, recreational activities and information in general, try visiting our website at www.oakcreekwi.org. Look for a citizen input survey on the website towards the end of 2004. We would like to know what social and family events YOU would like to see in our community.

Watch for birthday events as the City of Oak Creek turns 50 in 2005!

The Oak Creek Veterans’ Memorial was dedicated on November 13th. Located at 6th and Rawson Ave., it is a beautiful and reflective memorial dedicated to the men and women who have served or who are currently serving in the United States military. If you are in the area, please feel free to stop in any time.

As always, “Meetings with the Mayor” continue to be held the 2nd Saturday of the month here at City Hall from 9:00 a.m. to noon. Stop in for coffee and conversation.

Interested residents may contact the Clerk’s Office for an application requesting to serve on one of the City’s many boards and commissions as vacancies occur.

Happy Holidays and God Bless America!

“It’s amazing how much can be accomplished when no one cares who gets the credit.”

Dick



CITY CELEBRATIONS!

Look who is turning 50! Happy Birthday City of Oak Creek.

The Celebrations Commission is looking for residents who have 1) great ideas for planning a birthday party and 2) looking for volunteers to make this the best celebration ever. Contact the City Clerk’s office at 768-6500 or e-mail us at:

celebrations@oakcreekwi.org



4th of July

Once again the City and Legion have joined together in bringing you a fun filled weekend of activities. If you liked what we did last year...you’re going to like this year even more.



Summer Concert Series-June, July, August & September

Get ready with your lawn chairs and picnic baskets...the concerts are back. Stay tuned for the line up!

City Pig Roast-September

Once again, September bring the pigs to the park for a tasty afternoon of food, music and fun for the family. Hope you join us again for this fun event!

Halloween-October

Little ghosts and goblins come out in October for a fun afternoon of Trick or Treat.



Christmas Tree Lighting Ceremony - December

Santa’s in his sleigh . . . Come and join the fun of greeting Santa and enjoy the sounds of the holiday. Stay tuned for a date and time.

We need your help. Please check out the City website, current city events and take the survey.

Please fill out the survey...your input is needed! We are looking for your input on the events that we have planned for 2005, any new events that you would like to see the City sponsor and we are looking for volunteers to help with the planning and volunteer your time to help make the event a successful one.



Greetings Everyone:

The last 5 months have certainly flown by quickly! During that time I've taken the opportunity to learn as much as I can about the residents, businesses, commerce, industry, issues and operations of the city as I can. I've met many of you at community events and functions and I'd like to meet many more in the near future.

Quite a few of the people I've met have asked for my impression of the City of Oak Creek, so I thought I would let everyone know. I think the city is a solid, active and interesting community, with a great spirit and a tremendous future. It's truly an exciting place to be and I'm happy to be here! Having worked in a number of other communities in southeastern Wisconsin, it's my opinion that the elected and appointed leaders of Oak Creek all have the best interests of the City in mind-which is refreshing.

In the last few months I've been working closely with the Mayor, Council Members, various committees, department managers and staff on a number of projects and processes, including the 2005 budget, economic development, the WE Energies expansion, the 27th Street Study, a strategic plan and various administrative measures. All of these projects are important and contribute to Oak Creek's operation and/or identity. As many of these issues develop, you'll be hearing and seeing more about them.

I'm glad to be a part of the Oak Creek community and a member of the team that's working on the City's behalf to make the City shine brightly, like the jewel that it is. I'm looking forward to Oak Creek's future and hope you are too!

As 2005 approaches, I'd like to wish each of you a happy holiday season, and a wonderful, safe and healthy new year! Happy Holidays!

Barbara S. Blumenfeld, Ph.D.

TABLE OF CONTENTS

DEPARTMENTS & DIVISIONS:

Celebrations Committee	2
Community Development.....	11
Engineering Department.....	6
Fire Department.....	8
Forestry	12
Health Department.....	4
Library	5
Parks Department	13
Police Department	10
Street Division	16
Treasurer's Office	7
Water & Sewer Utility	9

ARTICLES OF INTEREST:

Branch Pick Up.....	16
Child Safety Seat Inspections.....	9
City Calendar	17
Construction Update	11
Crime Stoppers	10
Development & Safety Fair.....	4
Do Cars Create Storm Water Pollution?.....	6
Election Information: Spring	11
Facilities List & Map.....	14,15
Garbage Cart & Recycling Cart Location	16
Health Expo	4
Holiday Rubbish/Recycling Collection	16
Holiday Safety Tips	8
Municipal Court: Fines & Open Records.....	10
Park Reservations & Permit Information	13
Parking: Winter Restrictions.....	10
Parks: What's New for 2005	18
Pet License Information	4
Property Tax Payment Information	7
Snow & Ice Removal	16
Storage of Treated Water	9
Tips for Staying Healthy This Winter	4

RECREATION GUIDE INDEX

Recreation Guide.....	21-47
Recreation Registration Forms.....	43 & 45
Registration Made Easy Procedures.....	42

COMMUNITY ED./SCHOOL PROGRAMS:

Community Education Program	19
-----------------------------------	----

HEALTH DEPARTMENT

THANK YOU

Residents of Oak Creek,
Thank you for your assistance this past year with the pertussis (whooping cough) outbreak. Your patience in answering our questions about pertussis when we have contacted you has been appreciated. Your willingness to take preventive medication when in contact with a confirmed or suspected case has helped to control the outbreak. Please remember to report any suspected contagion to the health department at 768-6525.
Thanks again,
Debbie and Staff

TIPS FOR STAYING HEALTHY THIS WINTER



- Cover your mouth and nose when sneezing and/or coughing.
- Wash your hands frequently.
- Drink plenty of fluids, at least 6-8 glasses of water per day.
- Eat at least 5 servings of fruits/vegetables per day.
- **STAY HOME IF YOU ARE ILL.**

DO YOU NEED A MAMMOGRAM?

January 27 & January 28



A mammography clinic will be held on January 27th and 28th from 8am to 12:30pm at Manor Pointe Apartments, 700 East Stonegate Drive. Mammograms will be performed by Aurora Total Health Mobile Mammography. This clinic is open to all women. Aurora Total Health will bill insurance companies. Women who do not have health insurance or are under-insured may qualify for a free mammogram through the Wisconsin Well Women Program. One must be between 50 and 64 years and must meet the income guidelines to qualify for the free mammogram. For more information or to reserve an appointment, contact **Jackie Benka, RN at the Oak Creek Health Department at 768-6525.**

DEVELOPMENT AND SAFETY FAIRS

The Health Department will again be holding Development and Safety Fairs in 2005. These fairs are for all children ages 3-4 years. The screening includes items for language, reasoning skills, and some physical activities. Children will have the opportunity to make a nutritious snack. Parents will learn about home and personal safety and will have a chance to ask questions about their child's development. Call 768-6525 for more information and to schedule your child's appointment.

HEALTH EXPRESS

The Health Department will be continuing our prevention grant program. The Health Express program encourages participants to improve their cardiovascular health by making small



behavioral changes. Participants will select an individual goal such as consuming more fruits and vegetables or increasing physical activity. Individuals and/or families are welcome. Tips, activity logs, special programs, incentives and other activities will be offered as part of this program. There will be information available about the Health Express in March. Call us at 768-6525 for more information.

HEALTH EXPO-March 26, 2005

The 11th annual Chamber of Commerce (SECUB) Health Expo will be held on Saturday, March 26, 2005, at the Oak Creek Community Center from 10 AM – 3 PM. There will be something for everyone, no matter what your age! Come and learn what health care and related opportunities are available in the area.



PET LICENSE INFORMATION

The City of Oak Creek requires a license for dogs and cats over five months of age. Residents must provide a current certificate of rabies vaccination (showing the tag number and the expiration date) at the time of licensing. You may mail in the certificate along with your application and fee, and it will be returned with your license. The license year commences January 1 and ends December 31. The deadline for purchasing a license is March 31. Starting April 1, a late fee will be assessed. Late fees are double the amount due. If you have any questions, please contact the Treasurer's office at 768-6501.



Male or Female Dog/Cats	\$20.00
Neutered/Spayed Dog/Cats	\$10.00



To see the City Pet Ordinance please visit our website at www.oakcreekwi.org. Click on the link found under City Departments, Treasurer's Office, and then Pet Licensing.



OAK CREEK PUBLIC LIBRARY

HOLIDAY HOURS

The library will be closed Thursday, December 23 through Sunday, December 26 and Thursday, December 30 through Sunday, January 2 for the Christmas and New Year's holidays. When the library is closed, there is a return drop available on the east side of the building.



Please do not use the return drops for items labeled "Do not return in book drop." Books are heavy and can cause these items to be damaged if they fall on top of them.

UPDATES AND UPCOMING EVENTS

Want to know what's going on at the library? Visit our web site at: <http://www.mcfls.org/ocpl/>. There you can find out about upcoming programs, access the library catalog, read the latest library newsletter and much more.

DISPLAY CASE AVAILABLE

Interested in showing off your craft, collection or hobby? The library's showcase is available for displays on a month to month basis. Contact Jon at the reference desk (764-4400 ext. 2) if you are interested in displaying your collection or hobby.

FAIR HOUSING IS YOUR RIGHT

FAIR HOUSING IS YOUR RIGHT: PROTECT YOURSELF!

Seeking housing is never an easy task. For many Milwaukee County residents, illegal discrimination makes finding and keeping housing much more difficult than it should be. Housing discrimination is common, yet most people remain unaware of its prevalence. Equal housing opportunity – the idea that all people should have equal access to all the housing they can afford – is still an elusive dream for our community.

Fair housing laws make it illegal for housing providers (landlords, real estate agents, apartment managers, etc.) to discriminate based on any of the following categories:

- Race
- National origin/Ancestry
- Disability
- Sexual orientation
- Lawful source of income
- Family status (household composition, including presence of children)
- Sex
- Color
- Religion
- Marital status
- Age

Housing discrimination appears in many different forms. Sometimes housing providers discriminate overtly by making statements to applicants such as "we only rent to working people," "no kids allowed," or "we don't rent to single moms."

METROPOLITAN MILWAUKEE FAIR HOUSING COUNCIL

In this day and age, however, housing discrimination is often subtle and difficult to detect. Sometimes people leave an interaction with a housing provider not knowing that they were treated differently than other people because of their race, because they have kids or because they have a disability. The following are some possible "red flags" that may indicate illegal discrimination:

- You called about an apartment for rent. You were told that it has been rented, but you continue to see that apartment advertised in the newspaper or with a "for rent" sign.
- You ask to make an appointment to see an apartment, and

the landlord tells you that you must bring your entire family along.

- A landlord or apartment manager gives you confusing or contradictory information.
- You are told of extremely long waiting lists.
- You are told that you don't meet a housing provider's eligibility criteria, but the provider won't tell you what the eligibility requirements are.
- A landlord, rental manager, or real estate agent doesn't return your phone calls.
- Your lease is non-renewed for no apparent reason.
- Your landlord refuses to allow you to make modifications to your apartment to make it physically accessible for you.

If you're concerned that you may have experienced a violation of fair housing law, there are ways to address the problem. Victims of housing discrimination have the right to pursue complaints in public administrative agencies, such as the Wisconsin Equal Rights Division. People with housing discrimination complaints may also file lawsuits in state or federal court.

If you have any questions regarding housing discrimination, fair housing laws and what your options may be for pursuing a complaint of housing discrimination, call the **Metropolitan Milwaukee Fair Housing Council at 278-1240**.

The Fair Housing Council offers many helpful services, including:

- Counseling for persons alleging housing discrimination.
- Investigations on behalf of victims of housing discrimination.
- Assistance in filing fair housing complaints with an administrative agency or in a court of law.

In addition, the Fair Housing Council provides educational presentations to neighborhood groups, civic and religious organizations, social service agencies, community centers and other groups that are interested in learning more about fair housing law and housing discrimination. **Please call Felita Daniels Ashley at 414-278-1240 to schedule a presentation.**

ENGINEERING DEPARTMENT

DO CARS CREATE STORM WATER POLLUTION?

Most people do not realize that in addition to their widely publicized effects on air quality, cars can add numerous pollutants to our lakes and streams.

We have all seen how a bright fresh new snow turns dirty and dark in areas near roads and parking lots after only a couple of days. This is just one way to visualize the effects of some of the pollution left by our cars and trucks. Each time it snows again, a fresh new layer covers the old grimy layer, until layers of pollution are trapped within the snow banks. Once spring comes, the pollution and particles trapped in the layer of snow will wash with the snow melt into our streams, rivers and lakes. What does not wash off with the snow melt itself, will be left on the pavement until the next rain storm comes along to wash it clean.



Take a look at a parking lot the next time it rains. During the early part of the rain, you may notice an oily sheen, green streaks of leaked antifreeze, and dark gritty particles in the puddles. Look again after it has rained for a while, and you may notice that the oily sheen is no longer there, and the puddles no longer look gritty. Most of us don't stop to think that the ground now looks so clean only because the pollution has been washed away by the rain water, and carried along with the rain water into the storm sewers and ditches, which empty into our lakes and streams with no treatment to remove these pollutants first.

We all know that when the tread on our tires wears away, we need to replace them. What we don't usually think about is that all the rubber from the tire tread is left on the roads, parking lots, and driveways in the form of small rubber particles. These get washed away during rain storms, and are deposited into our rivers and lakes. Tiny bits of brake pads and rusted metal from cars also get washed into the waterways.

If you change your own oil, do not dump it into a storm drain. Just five quarts of oil from a single oil change can create an oil slick the size of two football fields, or pollute a million gallons of drinking water.¹ Recycling is the only safe way to dispose of used motor oil.

Many people enjoy washing their car at home in the driveway. Although this is not illegal, it can be harmful to the environment. You may have noticed white or dirty foam floating in the creeks, or a thick white film coating the area where a storm pipe opens into a stream.



These are usually the result of residential car washing, where the soap is washed off the driveway and into the storm water system. The phosphates in some soaps can act like fertilizer in the water, encouraging algae growth. Decomposing algae is unattractive and also uses up oxygen in the water, which can be harmful to fish in the area. The best alternative is to use a commercial car wash. The wash water from a commercial car wash is often recycled, and the dirty water is sent to a plant for treatment prior to going into our waterways.

The City has initiated a program to identify and prevent illicit discharges throughout the City. City staff are visually inspecting outfalls throughout the City, and conducting chemical sampling if a dry weather flow is present. Most dry weather flows are from sources such as sump pump discharges or lawn sprinklers. However, if the testing shows a parameter is present that indicates illicit discharge, further investigation will be conducted to find and eliminate the source of the illicit discharge. This is one of the ways in which the City is working to protect and improve the quality of our water resources.



¹ UWEX Publication
"Can Cars Cause Water Pollution?"

CITY TREASURER'S OFFICE-continued

ATTENTION TAXPAYERS (continued from Pg. 7)

OTHER IMPORTANT INFORMATION/CHANGES

There will be a new full page insert of valuable tax payment information included with your Notice of Real Estate Tax due. To avoid delays with the processing of your payment, please read the insert carefully.

Effective December 1, 2004, there will be a \$.25 charge for additional copies of tax bills. Beginning with 2003, tax information has been made available on the Oak Creek website-<http://www.oakcreekwi.org/>. From the homepage, click on Property Tax and Assessment Information (Land Records Search). You may search by parcel number, name or address. If you do not have internet service, computers and copy machines are available at the Oak Creek Public Library (north of City Hall). Additional Treasurer's information may be found on the City's website by clicking the applicable link found under City Departments and then Treasurer's office.

CITY TREASURER'S OFFICE

ATTENTION TAXPAYERS!!!



Please read carefully for **IMPORTANT CHANGES** for payment of property tax bills--

MAKING A PAYMENT

Check(s) should be payable to **Treasurer**, or **City of Oak Creek**.

BY MAIL, FOR TAX PAYMENTS MADE ON OR BEFORE JANUARY 31, please use the green envelope enclosed with your tax bill. Tax payments after January 31, mail to: Treasurer, City of Oak Creek, 8640 S. Howell Ave., Oak Creek, WI 53154.

DRIVE-UP 24 HOURS DEPOSITORY, located at City Hall on the east side of the south parking lot. **NO CASH PLEASE!**

IN PERSON AT ANY OF THE FOLLOWING FOUR TRI CITY BANK LOCATIONS (No payments will be accepted after January 31)

- * S. 27th St. and College Ave
- * W. Ryan Rd. near S. 27th St
- * MegaMall Pick 'n Save Store (corner of Puetz Rd & Howell Ave.)
- * Pick 'n Save store (S. 27th near College Ave.)

IN PERSON AT CITY HALL, normal business hours are from 8 a.m. to 5 p.m., Monday thru Friday. We will be closed December 23, December 24, and December 30. Friday, December 31, 2004, we will be **only** open from 9:00 a.m. to 12 noon.

Before stepping into the payment line:

- * Please have all checks completed in advance and;
- * Bring your tax bill(s) with you to the Treasurer's Office or have your parcel number(s) available.
- * Otherwise, we will take care of the next person in line while you prepare your payment. If needed, a computer with an instruction sheet will be available for you to look up your parcel number(s).

RECEIPTS

To receive a receipt for a payment made via US mail or depository, you must include your original tax bill, a copy of your tax bill or a self-addressed envelope with your payment. If you pay your tax bill at Tri City Bank you will receive a receipt from the bank. If you did not receive a receipt or would like a receipt from the City Hall-Treasurer's office, it will be available for pick-up through September 30, 2005.

OVERPAYMENTS

- * For overpayments at City Hall, cash refunds will be given up to \$200

- * Any overpayments over \$200, a check will be mailed three to four weeks from payment date. To receive a refund immediately for an overpayment over \$200, please make your payment at one of the four Oak Creek Tri City Bank locations.
- * All refunds by check will be made payable to the Payer, even if your mortgage company makes a payment from your escrow account after you have made payment in full.

PAYMENT DEADLINES

"PAID-IN-FULL" PAYMENT IS DUE JANUARY 31, 2005.

INSTALLMENT OPTION, All payments must be made as listed below. If you choose the installment payment option, please note the due dates on your calendar as we do not send reminder notices. Any payment not made by its due date will result in delinquency of the entire unpaid principal and forfeiture of the installment option. Payments are considered delinquent if received in person, or post-marked, after the due date. The postmark governs the date of payment-NOT the date on your check. *There is no grace period.* All delinquent tax will accumulate interest and penalty charges from February 1st at 1-1/2 percent per month on the unpaid principal balance, regardless of when it becomes delinquent.

- * **FIRST INSTALLMENT**-50% of net real estate tax plus all special charges due on or before January 31, 2005
- * **SECOND INSTALLMENT**-25% of net real estate tax due on or before March 31, 2005
- * **THIRD INSTALLMENT**-25% of net real estate tax due on or before May 31, 2005

Please, if at all possible, take advantage of the U.S. Mail, the drive-up 24-hour depository, or any of the four Tri-City bank locations, and avoid waiting in long lines at City Hall.

LOTTERY CREDIT

Those who qualify are owners of a home in Wisconsin who use the home as their primary residence on January 1 (Certification Date) of the year in which property taxes are levied. Primary residence is defined as the home where an individual lives more than six months of the year. If you did not receive the lottery credit in 2003 and are eligible for the credit in 2004, please complete a form which is available on the website at <http://www.oakcreek-wi.org/>. The link for the lottery credit form can be accessed from the Treasurer's Office page under City Department. Lottery credit forms are also available at City of Oak Creek Treasurer's Office. Please include a completed form with your tax payment and the lottery credit will be deducted from your tax due. We must receive the completed form no later than January 31, 2005, in order for us to apply the lottery credit to your 2004 property tax bill.



FIRE DEPARTMENT

CANDLE SAFETY

Remember that a candle is an open flame. It can easily ignite any combustible nearby.

Facts and figures

- New data shows that home candle fires peaked on Christmas Day, second peak day was New Year's Day and the third peak day was Christmas Eve.
- On Christmas Day in 1999, there were an estimated 200 home candle fires reported to fire departments in the U.S. This is five times the daily average of 40 such fires seen throughout the year. Candle fires represent about 10% of the home structure fires that occurred on Christmas Day. January 1 ranked second with 150 home candle fires, and Christmas Eve ranked third with 130.
- During 1999, an estimated 15,040 home fires started by candles were reported to public fire departments. These fires resulted in an estimated 102 civilian deaths, 1,473 civilian injuries and an estimated direct property loss of \$278 million.
- Home candle fires jumped 20% from 1998 to 1999 to hit their 20-year peak in 1999, the latest year for which data is available.
- Candle fires accounted for an estimated 4.1% of all reported home fires.
- Two-fifths (40%) of the home candle fires started in the bedroom.
- Over the last decade, candle fires have almost tripled from the 5,460 reported in 1990.
- December had almost twice the number of home candle fires of an average month.
- Thirty-eight percent of candle fires occurred after candles were left unattended, abandoned or inadequately controlled; Twenty-three percent occurred when some form of combustible material was left or came too close to the candle; Eight percent were started by people (usually children) playing with the candle; Thirteen percent started after the candle user fell asleep.



- Place candle holders on a sturdy, uncluttered surface and do not use candles in places where they could be knocked over by children or pets.
- Keep candles and all open flames away from flammable liquids.
- Keep candle wicks trimmed to one-quarter inch and extinguish taper and pillar candles when they get to within two inches of the holder or decorative material. Votives and containers should be extinguished before the last half-inch of wax starts to melt.
- Avoid candles with combustible items embedded in them.

Candles & children:

- Keep candles up high out of reach of children.
- Never leave a child unattended in a room with a candle. A child should not sleep in a room with a lit candle.
- Don't allow children or teens to have candles in their bedrooms.
- Store candles, matches and lighters up high and out of children's sight and reach, preferably in a locked cabinet.

During power outages:

- Try to avoid carrying a lit candle. Don't use a lit candle when searching for items in a confined space.
- Never use a candle for a light when checking pilot lights or fueling equipment such as a kerosene heater or lantern. The flame may ignite the fumes.

CHRISTMAS TREE SAFETY TIPS

- When decorating Christmas trees, always use safe tree lights. (Some lights are designed only for indoor or outdoor use, but not both.) Larger tree lights should also have some type of reflector rather than a bare bulb and all lights should be listed by a testing laboratory.
- Never use electric lights on a metal tree.
- Follow the manufacturer's instructions on how to use tree lights. Any string of lights with worn, frayed or broken cords or loose bulb connections should not be used.
- Always unplug Christmas tree lights before leaving home or going to sleep.
- Never use lit candles to decorate a tree, and place them well away from tree branches.
- Try to keep live trees as moist as possible by giving them plenty of water daily. Do not purchase a tree that is dry or dropping needles.
- Choose a sturdy tree stand designed not to tip over.
- When purchasing an artificial tree, be sure it is labeled as fire-retardant.
- Children are fascinated with Christmas trees. Keep a watchful eye on them when around the tree and do not let them play with the wiring or lights.

Source: National estimates based on NFIRS and NFPA survey (preliminary data).

Safety tips:

- Extinguish all candles when leaving the room or going to sleep.
- Keep candles away from items that can catch fire (e.g. clothing, books, paper, curtains, Christmas trees, flammable decorations).
- Use candle holders that are sturdy, won't tip over easily, are made from a material that can't burn and are large enough to collect dripping wax.
- Don't place lit candles in windows, where blinds and curtains can close over them.

CHRISTMAS TREE SAFETY TIPS-Continued

- Store matches and lighters up high, out of the reach of children, preferably in a locked cabinet.
- Make sure the tree is at least three feet (one meter) away from any heat source and try to position it near an outlet so that cords are not running long distances. Do not place the tree where it may block exits.
- Safely dispose of the tree when it begins dropping needles. Dried-out trees are highly flammable and should not be left in a house or garage, or placed against the house.



CHILD SAFETY SEAT INSPECTIONS

The Oak Creek Fire Department offers free child safety seat inspections for Oak Creek residents. Safety seat checks are conducted at Fire Station #3 (7000 S. 6th Street) by appointment. If you wish to request an inspection, contact:



Anna Kelly at 570-5630.

Sorry, no walk-ins, and inspections are limited to Oak Creek residents.

NEW FIRE FIGHTERS

Jesse Teichmiller

Jesse was born and raised in Wauwatosa, Wisconsin and graduated from Wauwatosa East High School. Jesse started his fire service training in 1997 when he joined the New Berlin Fire Department. Jesse is a Fire Fighter Level II, Driver/ Operator, Haz Mat Technician, and Emergency Medical Technician. For the past 3 ½ years, Jesse worked for the Town of Brookfield Fire Department. Jesse is eager to begin his career with the City of Oak Creek.



Peter Olson

Peter grew up in Racine and went to Washington Park High School where he graduated in 1991. He started pursuing his fire career in 2000 when he joined the Pewaukee Fire Department as a paid on call Firefighter. Peter is Firefighter Level II, Driver and Aerial Operator certified and worked as an EMT-Intermediate when he was with Pewaukee. Peter is married and has a child on the way.



Aaron Kolosovsky

Aaron has lived in Cudahy his whole life and has always been interested in Firefighting. He graduated in 1999 from Wisconsin Lutheran high school and enrolled at MATC for Fire science. He has an associates degree, as well as Firefighter 2, Emergency Medical Technician, Driver Operator, and has some education in Hazardous Materials. Besides his education Aaron also has three years experience as a Paid on Call Firefighter for the city of St. Francis. He is very excited about his new position and looks forward to a long career with Oak Creek.



OAK CREEK WATER & SEWER UTILITY

DNR APPROVES OAK CREEK AQUIFER STORAGE OF TREATED WATER

Utility first in state to inject treated water into ground for storage, pump into water system

After conducting a five-year pilot program to study the feasibility of storing treated drinking water underground for later use during peak demand periods, Oak Creek Water and Sewer announced today it became the first Wisconsin utility to receive approval from the DNR to employ the storage method known as aquifer storage recovery (ASR) as part of their permanent system.

“This technology allows Oak Creek to pump normal treated drinking water underground into the aquifer during low-usage winter months and then recover that water during periods of high-flow summer months,” said Mike Sullivan, utility engineer.

Like many Wisconsin communities, Oak Creek faces increased demands for water during the summers. This approach allows ratepayers to avoid large expenditures for treatment plant and storage expansions, which otherwise would be needed to meet peak demands.

“The DNR approval allows us to avoid a costly projected expansion of our treatment plant as early as 2008,” said Steve Yttri, utility general manager. “Ratepayers will save an estimated \$8 million in infrastructure improvement costs as we ultimately expand lower cost underground storage to 15 million gallons.”

Oak Creek began an ASR pilot program in 1999. During the five-year program, the utility has pumped millions of gallons of treated water into a reconstructed 1,800-foot-deep well. After the DNR was convinced the water was safe and met health standards for consumers, the utility was allowed to distribute the water several times through its water system during the pilot program. ASR is currently used in 13 other states.

“Consumers did not report changes in water quality to the utility when we distributed water stored underground,” Yttri said. “When you consider that our utility produces some of the highest quality water in the nation, that’s a good indication that aquifer storage recovery works.”

The Oak Creek Water and Sewer Utility produces some of the highest quality drinking water in the nation. Always seeking new ways to improve, utility employees conduct thousands of water quality tests annually to ensure the cleanest, safest drinking water possible flows to customers. In fact, the utility tests nearly three times more than the 970 quality controls required by government regulations. The utility is proud to announce its water meets and exceeds all federal and state drinking water health standards.

POLICE DEPARTMENT

PARKING RESTRICTIONS

The Police Department would like to remind all citizens that winter parking restrictions are in effect until April 1st. During this time, there is no parking allowed on the streets in the City of Oak Creek during the following hours:

- Monday thru Friday from 2:00 a.m. to 6:00 a.m.
- Saturday and Sunday from 2:30 a.m. to 6:00 a.m.

Permission may be granted by the Police Department (on a day-to-day basis) for exceptions to this during emergencies, if a vehicle becomes disabled, or if there is an overnight guest.

UTILITY PROBLEMS

During severe weather, the Police Department receives an abundance of telephone calls from residents wishing to report utility problems. These problems should be reported directly to the respective utility company at the following 24-hour phone numbers:

- | | |
|-------------------------|----------------|
| • Wisconsin Electric | 221-3333 |
| • Wisconsin Natural Gas | 1-800-236-9874 |
| • Ameritech Repair | 1-888-611-2344 |

The above-listed telephone numbers are answered 24-hours per day, seven days per week.

SNOW & ICE REMOVAL

Citizens are reminded that it is the responsibility of the owner or occupant of property abutting or fronting public sidewalks to remove all snow and ice within 24 hours after a snow fall. If the ice cannot be removed, salt or other similar substance must be spread to eliminate the hazard to pedestrian traffic. In addition, directing sump pump, watershed or rain gutter spouts onto the sidewalk or roadway is against City Ordinance.

Also, for those who plow their driveway or use a snow blower, remember it is illegal to push or blow snow into the street or dump it onto any public ground.

ALARM REQUIREMENTS

The City of Oak Creek has an Ordinance pertaining to any alarm systems installed in homes or businesses that are connected either to the Police or Fire Department or a commercial alarm company. The Police Department requires the completion of a Night Call Information/Alarm Application Form which contains information needed by the police

should your alarm sound when no one is on the premises. If you have an alarm and have not completed this form, please contact Administrative Manager JoAnn Stencel at the Police Department (766-7660) so that you can supply the information needed.

MAKING CHARITABLE CONTRIBUTIONS

Occasionally we are approached by persons representing charitable organizations seeking monetary contributions to fund their programs. Most often these are hard working volunteers representing worthwhile organizations that support our community.

Keep the following tips in mind before making any type of monetary contribution:

- Make sure the person has identification from the organization they are representing. If in doubt, do not give them money. Instead, contact the Police Department who will verify the validity of the person.
- Any donations in excess of a few dollars, should be given in the form of a check made out to the organization—NOT to the person collecting the funds.

If you encounter someone you suspect is trying to defraud you, tell them “no”, close the door, and call the police department immediately at 762-8200.

OAK CREEK CRIME STOPPERS

The Oak Creek Police Department is always looking for your help solving crimes. You can remain 100% anonymous and receive a reward for your tip. Crime Stoppers also sponsors a “Quick 50” program in the middle schools and high school. Students remain anonymous when calling in “tips” and can receive a \$50 reward for any information leading to the confiscation of *drugs, alcohol or weapons* on school property with an arrest of the offender(s).

Call the **Crime Stoppers hotline at 766-7699** and help keep our community a safe place to live. Donations are always welcome. Look for donation boxes for the Crime Stoppers Program at various businesses throughout the City.

FINE PAYMENTS & OPEN RECORDS REQUESTS

Fine payments and open records requests can be made during normal business hours--Monday through Friday from 8:00 a.m. to 6:00 p.m. and Saturday from 8:00 a.m. to 12:00 noon. A 24-hour drop box is available in the station lobby for payments after hours. For more information, please contact the following:

- 766-7658 - Open Records Requests
- 766-7621 - Municipal Court Information

NOTICE OF-- SPRING ELECTION



NOTICE OF SPRING ELECTION TUESDAY, APRIL 5, 2005

The following offices will appear on the April 5, 2005, spring ballot. Aldermanic terms begin on April 19, 2005. All terms are for two years unless otherwise indicated.

<u>Office</u>	<u>Incumbent</u>
Alderson, 1st District	Elizabeth J. Kopplin
Alderson, 3rd District	Ann M. Lampe
Alderson, 5th District	Dimity Grabowski

There will also be a special election for Municipal Judge, to complete a two-year term expiring May 1, 2006.

<u>Office</u>	<u>Incumbent</u>
Municipal Judge	Alice Rudebusch

The first day to circulate nomination papers is Wednesday, December 1, 2004, and the final day for filing nomination papers is 5:00 p.m., on Tuesday, January 4, 2005, in the office of the City Clerk.

The Spring Primary Election, if required, will be held on Tuesday, February 15, 2005.

NOVEMBER 2, 2004 ELECTION STATISTICS

The turnout at the November 2, 2004 Fall General and Presidential Election was tremendous, with 17,726 electors casting their votes, and an overall turnout of approximately 83 percent. Over 3,500 residents registered to vote on Election Day, and more than 2,300 absentee ballots were cast.

COMMUNITY DEVELOPMENT



The City of Oak Creek would like to take a moment to recognize some of the many developments that have been or are taking place in our community in 2004.

- ▶ Genevieve's Gardens
- ▶ Glen Crossing
- ▶ Ebenezer Child Care
- ▶ Bax Global
- ▶ Ryan Road Mobil
- ▶ PDQ Convenience
- ▶ Dry Creek condominiums
- ▶ North Shore Bank retail center
- ▶ Ashbury Woods condominiums
- ▶ Midwest Dialysis administrative office & limo service
- ▶ Emerald Meadows Addition No. 2
- ▶ Clover Ridge
- ▶ Willow Creek Estates
- ▶ Gladon Company
- ▶ Advance Auto Parts
- ▶ Office Max
- ▶ Pick and Save

The City also approved the new construction of Deerfield Elementary School which will be located on 3871 E. Bluestem Drive and the Veterans Memorial located at 552 W. Rawson Avenue.



The Department of Community Development has recently hired Jeff Fortin as city planner. Jeff started in August to fill the position vacated by Doug Seymour who was promoted to Director of Community Development. Jeff comes to us from the city of Glendale where he was the planning administrator. Jeff will be a valuable asset to the community and we wish him great success.



FORESTRY

2004 CITY FORESTRY UPDATE

TREE PLANTING

Our City forestry goal is to plant trees where they can make a difference in beautification, the environment and even property values. City trees are those trees along the streets, in the parks, boulevards and municipal landscapes. Each year we make an effort to replace dead or nearly dead trees. We are continually monitoring for vacancies and recording replacement needs.

In 2004, we began to plant trees through direct purchase, utilizing the existing internal labor force. The Highway Department assisted with both labor and the stump grinder for soil preparation. In the past, the City utilized contractors to purchase and install trees. We felt we could do better in tree selection, careful installation, overall survival rate and cost savings, and we have.

In 2004, from spring to fall, we planted over 200 street trees, made over 100 contractor replacements, added 14 trees to our downtown area boulevards (Howell Avenue north and south of Puetz Road) and made approximately 50 park and municipal ground installations.

We have not met our goal of making **all** street tree **replacements** throughout the year. We still have approximately 100 vacant replacement sites to which we will make first priority in the spring of 2005. That number always goes up after winter casualties keeping replacements a constant challenge.

Many newer subdivisions await initial trees. There are an estimated 2,000 vacant planting sites planned for the coming years. As development continues, no doubt thousands more will need filling. Our criterion is to wait for property occupation and landscaping completion before planting street trees in newer subdivisions. We usually begin a new area when 90 percent of homes, or better, are landscaped. Often it is necessary to swing back through those subdivisions for one or two more years before they are completely tree lined. At this point, development is a few steps ahead of tree planting but we strive to eventually catch up.

WATERING ASSISTANCE PLEASE

The best way to ensure tree establishment is to water trees for the first 3 years as often as needed – and additional years when drought conditions occur. A fair rule of thumb is 10 to 15 gallons of water a week, especially critical during hot, windy times. Though we did see a fair amount of rain this past spring, by August we were in our usual summer drought. One serious drying out is enough to kill a tree. A late autumn watering will also ensure a better chance of making it through the winter.

The City is not able to allocate labor to water residential area trees which is why we request that the resident water street trees abutting their property. If you are not willing to water your tree, please request that we do not plant at your address. Many people await new and replacement trees while many trees die needlessly from lack of water.

STUMP GRINDING

Stump grinding is usually winter work. City Forestry keeps a list of street tree sites in need of stump grinding which is turned over to the Highway Department who perform the work. We have run a bit behind in stump grinding due to many removals. If you question whether your site is on our list, feel free to call and double check.

PRUNING

We hope to spend the winter performing a lot of pruning work on both large and establishing trees. If you have a critical problem, such as branches hanging over your driveway getting in the way, please call and we will schedule a special clearance pruning. Otherwise, we will be there to prune as we approach your pruning unit. There are 5 large tree pruning units in the City and we are currently finishing up Unit 3. (Contact Forestry for a copy of the pruning unit map.)

Young tree training pruning is determined in several ways: by species, subdivision and year planted. We hope to concentrate on young trees from December into March of 2005. Thank you for **not** helping us prune street trees. We are trying to selectively shape trees to encourage the longest-lasting, safest possible form. Municipal pruning is an art and a science that is learned, not obvious.

RESIDENTIAL SURVEY

If you have any interest in attending a hands-on, residential tree care class next summer, please call or email contact below.

GYPSY MOTH UPDATE

Although we had a good year as far as caterpillar activity, the gypsy moth is established in the area and egg masses are numerous in all three of the 2004 spray zones. We will again move to spray in the Miller Park area, approximately 23 acres of SE Section 28 and, the County will handle the northern wooded edge of Bender Park. We will survey additional wooded areas prior to the December DNR Grant deadline for aerial spray. Stay tuned for the announcement of a public Gypsy Moth informational meeting. Feel free to report high densities of egg masses to City Forestry. It would be considered high if you can easily count 50 masses in your yard. Oaks are a favorite food source of the gypsy moth.

Forestry questions? Contact Rebecca Lane, City Forester at (414) 768-5861 or rlane@oakcreekwi.org.

PARKS

RESERVATIONS / PERMITS

The following may be reserved by Oak Creek residents. *Proof of residency is required.* Any non-reserved facility (except Henry Miller Park Pavilion) may be used on a first-come, first-served basis without a permit. Note: The permit holder receives priority for the rented facility.

Ballfields/Tennis Courts/Football & Soccer Fields:

\$3 for one hour. Use of courts and fields without a permit is on a first-come, first-serve basis. Rental does not include equipment, supplies, etc. Call for league, tournament and special event rates.

Picnic Areas:

\$3 per hour.

Open Air Shelter: (Oak Leaf & Johnstone Park)

Up to 4 hours \$10

Daily \$20

Volleyball Sets or Throw Bases:

Due to limited availability, please call in advance to reserve.

\$10/weekend (Fri/Sat/Sun) +\$15 refundable cash security deposit.

\$5/daily (Monday through Thursday) +\$15 refundable cash security deposit.

Late fee: \$5 per day

Alcoholic Beverages:

The possession, sale or consumption of alcoholic beverages and/or drugs is not allowed in parks, buildings, tennis courts, ballfields or any athletic field areas, etc.

Beer Permit:

Fee: \$10

Beer permits may be purchased which allows the consumption of beer by adults aged 21 and over when one of our facilities is rented (i.e. Miller Park shelter).

Please note that no other alcoholic beverages may be consumed such as liquor, wine coolers, etc.



Henry Miller Park Pavilion:

Henry Miller Park Pavilion is available to rent for your special events to Oak Creek residents.

Reservations are accepted *beginning January 3, 2005*, for the 2005 calendar year.

\$80 rental fee plus \$40 refundable security deposit for Friday thru Sunday *including holiday rentals.* (\$40 refund if cancelled prior to 30 days of the event).

\$40 rental fee for Monday thru Thursday plus \$40 cash refundable security deposit (non-refundable if cancelled)

Listed below are some of the features of the pavilion:

Located in the building are 6 picnic tables, 2 serving tables, "L-shaped" counter and refrigerator

+/- 25 picnic tables are located in the park area

Indoor capacity-60 persons maximum

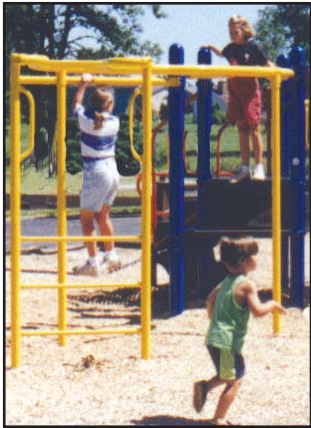
Separate indoor men's/women's rest rooms

No other appliances are in the building (i.e. stove, microwave, etc)

Pavilion rental hours are from 10 AM to 10 PM

For further information on permits or rentals, contact the Department at (414) 768-6515 or visit us on the City website at www.oakcreekwi.org.

FACILITIES LISTS: Parks, Playgrounds & Schools



Willow Heights Park

#25 on map

Site	Address	Shelter (o-open, b-bldg)	Indoor Pool	Tennis Courts	Basketball (c-crts, s-standard)	Volleyball (s-sand)	Ballfield (s-softball, b-baseball)	Picnic Facilities	Pond	Playground Eqpt.	Baby (bucket) swings	Vehicle Parking	Sledding Hill	Ice Rink	Health Stations (Partial)	Nature Area	Open Play Area	Recreational Pathway (est. size-miles) Non-motorized	Undeveloped Park &/or School Site	Soccer (s) / Football (f) fields	Skate Park-Undeveloped
1 Abendschein Park	1311 E. Drexel Ave.					1B						•				•	•				S
2 Camelot Park	7385 S. Chapel Dr.																				•
3 Carrollton School Park	8965 S. Carrollton Dr.			2	2C	1S				•	•						•	0.53			
4 Cedar Hills School	2225 W. Sycamore Ave.				2C					•	•						•				
Johnstone Park		O				S	2S	•		•	•					•	•				
5 Chapel Hills Park	2015 E. Oak St.			2	1C	S	1S			•	•			•		•	•	0.62			
6 Deerfield School	3871 Bluestem Dr.																				•
7 Edgewood School	8545 S. Shepard Ave.				1C, 1S					•	•					•					
8 Greenlawn Park	7628 S. Howell Ave.							•								•	•				
9 Haas Park	4200 E. Elm Rd.				2S	S	1S			•	•	•					•				
10 East Middle School	9330 S. Shepard Ave.					3S											•	0.80			•
Oak Park					2C,2S					•	•	•					•				
11 Kickers Creek Park	8460 S. Chicago Rd.											•									S
12 Lower Legion Park	9145 S. Shepard Ave.					1S	•				•										
13 Manor Marquette Park	700 E. Marquette Ave.			2	1C	•	1S			•	•	•		•	•	•	•	0.41			
14 Mardeand Park	10500 Glen Oaks Dr.																				•
15 Meadowview School Park	10420 S. McGraw Dr.			2	1C,2S	S	1S			•	•	•					•	0.45			
16 Henry Miller Park	315 E. Groveland Dr.	B					•	•						•			•				
17 Oak Leaf Park	401 W. Centennial Dr.	O		2	1C	S	1S	•		•	•						•	0.50			
18 Otjen Park	9300 S. Chicago Rd.				1C,1S					•	•	•					•				
19 Riverton Meadows Park	2800 E. Honeysuckle Dr.				1C	S	1S			•	•	•				•	•	0.58			
20 Senior High School	340 E. Puetz Rd.		•	9		3S					•						•				F
21 Shepard Hills School Park	530 E. Shepard Hills Dr.				4S	2S				•	•						•				
22 South Hills Parks	9299 S. 22nd St.																				•
23 South Hills Playground	2330 W. Southland Dr.				1C												•				
24 West Middle School	8401 S. 13th St.											•					•				S
25 Willow Heights Park	1111 W. Weatherly Dr.			2	1C	•	1S	•		•	•	•		•		•	•	0.41			

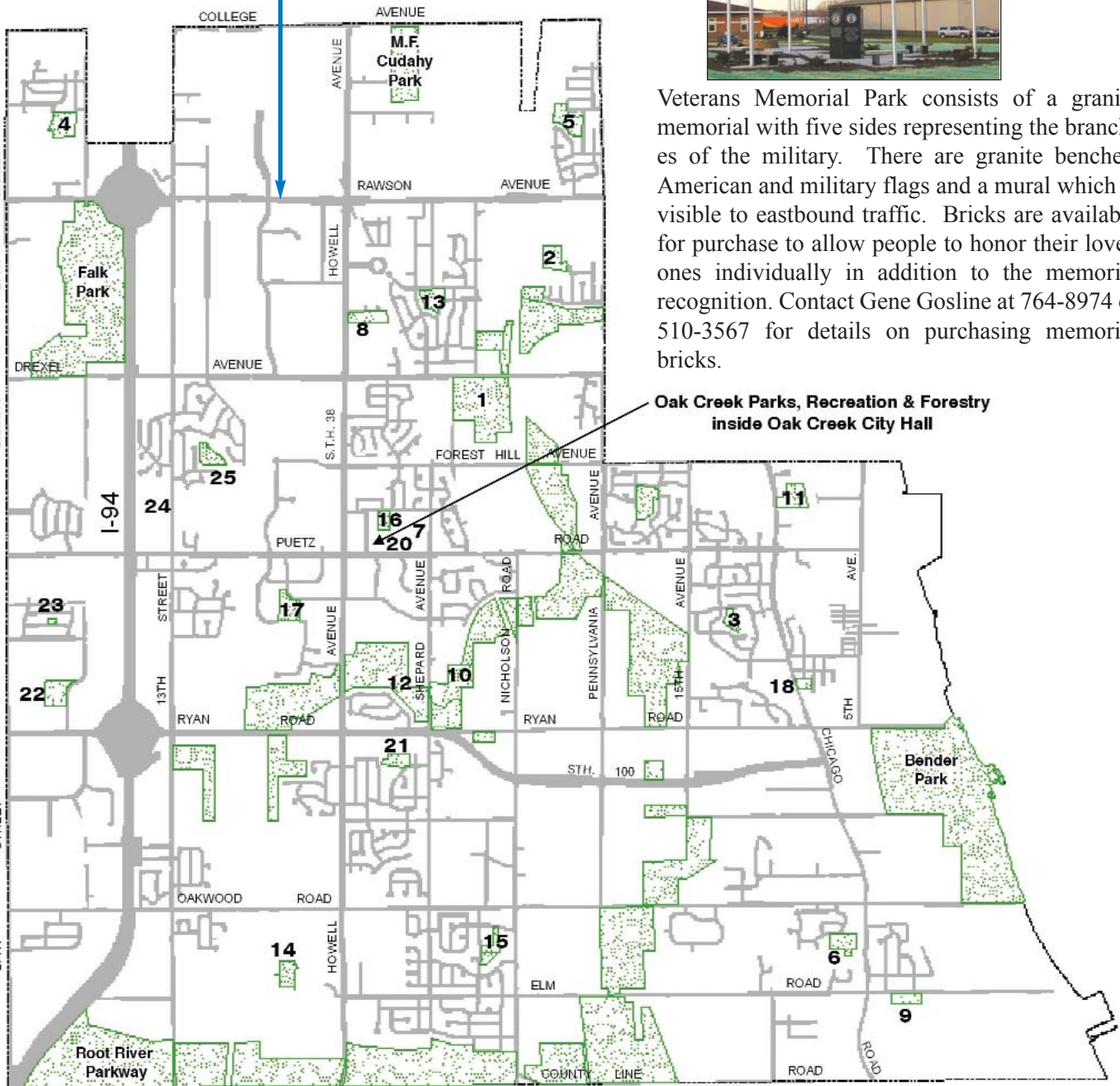
FACILITIES MAP: Parks, Playgrounds and Schools



Veterans Memorial Park
552 W. Rawson Avenue

Veterans Memorial Park consists of a granite memorial with five sides representing the branches of the military. There are granite benches, American and military flags and a mural which is visible to eastbound traffic. Bricks are available for purchase to allow people to honor their loved ones individually in addition to the memorial recognition. Contact Gene Gosline at 764-8974 or 510-3567 for details on purchasing memorial bricks.

Oak Creek Parks, Recreation & Forestry
inside Oak Creek City Hall



STREET DIVISION

SNOW AND ICE REMOVAL

The blowing and/or shoveling of snow onto City streets are in violation of the City of Oak Creek Municipal Code, Section 6.24(c) as follows: "Prohibited Placement. No person except the State, County or City shall deposit or cause to be deposited, upon any street, alley, sidewalk, parkway, or public land, any snow or ice taken or removed from his premises. No person except the State, County, or City shall use private or public lands within the City as a place for the disposal or dumping of snow or ice from public or private property or from another municipality except with the permission of the owner. The deposit of any snow or ice upon any street, alley, sidewalk, parkway, or public lands of the City, contrary to the provisions of this Chapter, shall be and is hereby declared to be a nuisance. The City may remove any snow and ice so deposited and cause the costs of such removal to be charged to the owner or occupant of the property from which said snow or ice was removed and illegally deposited, pursuant to Section 66.60(16), Wis. Stats."



Property owners are also required to keep clear their mailboxes and fire hydrant on their property per Section 6.24(d) as follows: "hydrant and Mailboxes. Every property owner or occupant shall keep all fire hydrant and mailboxes abutting his/her property free and clear of all snow and ice."

NEW BRANCH PICK UP POLICY

Beginning in 2005, branches will only be collected during the following months: April, June, August and October

To guarantee that your branches are picked up by the Street Department, you must have your branches to the curb or roadside by the first of the month. If you do not have your branches placed for pick up by the 1st, **your branches will not be picked up until the next pick up.**

Remember, branches are to be stacked neatly with the cut off ends facing the road.

BASKETBALL STANDARDS

There has been a problem with residents placing basketball standards in the right of way (Terrace Area). This area is defined as that area between the curb and the sidewalk, and where no sidewalk exists; that area between the street pavement and the right-of-way/property line.



Section 6.25 Terrace Areas, Section (d) of the Municipal Code states: "No structures or fixtures shall be placed in the terrace area. Examples of prohibited items would be basketball backstops, statuary, flagpoles and other objects. The exception to this subsection is the installation of a mailbox as specified by the United States Postal Service".

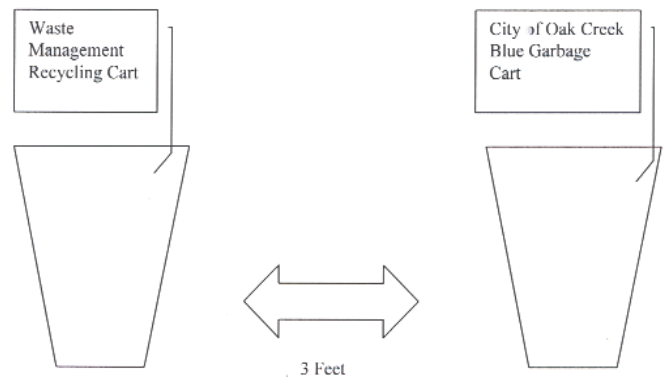
ACORN - CITY NEWSLETTER

HOLIDAY RUBBISH/RECYCLING COLLECTION DAYS

<u>HOLIDAY</u>	<u>DATE OF HOLIDAY</u>	<u>DATE OF PICK UP</u>
Christmas Holiday	Thurs. December 23, 2004	Wed. December 22, 2004
New Year Holiday	Thurs. December 30, 2004	Wed. December 29, 2004

NEW GARBAGE CART AND RECYCLING CART LOCATION

The City of Oak Creek has now changed to an automated garbage pick up system which means that a mechanical arm that is attached to the garbage truck will be mechanically picking up the City of Oak Creek blue garbage carts that were recently delivered to your residence. This automated arm must have a three foot (3') clearance in order to pick up the cart. No object can be placed within a three foot (3') radius of your blue garbage cart. This includes your Waste Management recycling cart. Please see the illustration at right.



CITY CALENDAR

December 2004

2	2:30-5:30 p.m.	Immunization Clinic
7	5:00 p.m.	Municipal Court
	7:00 p.m.	Common Council Meeting
8	4:30 p.m.	Board of Health
	7:00 p.m.	Traffic & Safety Commission
	7:00 p.m.	Water & Sewer Utility Commission
9	6:00 p.m.	Parks, Rec. & Forestry Commission
13	5:00 p.m. (Mon.)	Municipal Court
14	4:45 p.m.	Library Board
	7:00 p.m.	Plan Commission
16	9:00-11:00 a.m.	Immunization Clinic
	6:30 p.m.	Celebrations Commission
21	5:00 p.m.	Municipal Court
	7:00 p.m.	Common Council Meeting
23	CLOSED	CHRISTMAS
24	CLOSED	HOLIDAY
30	CLOSED	NEW YEAR'S
31	CLOSED	HOLIDAY



March 2005

1	5:00 p.m.	Municipal Court
	7:00 p.m.	Common Council Meeting
3	2:30-5:30 p.m.	Immunization Clinic
7	5:00 p.m. (Mon.)	Municipal Court
8	4:45 p.m.	Library Board
	7:00 p.m.	Plan Commission
9	7:00 p.m.	Traffic & Safety Commission
	7:00 p.m.	Water & Sewer Utility Commission
10	6:00 p.m.	Parks, Rec. & Forestry Commission
15	5:00 p.m.	Municipal Court
	7:00 p.m.	Common Council Meeting
17	9:00-11:00 a.m.	Immunization Clinic
	6:30 p.m.	Celebrations Commission
22	5:00 p.m.	Municipal Court
	7:00 p.m.	Plan Commission
25	CLOSED	FRIDAY BEFORE EASTER



January 2005

4	5:00 p.m.	Municipal Court
	7:00 p.m.	Common Council Meeting
6	2:30-5:30 p.m.	Immunization Clinic
10	5:00 p.m. (Mon.)	Municipal Court
11	4:45 p.m.	Library Board
	7:00 p.m.	Plan Commission
12	7:00 p.m.	Traffic & Safety Commission
	7:00 p.m.	Water & Sewer Utility Commission
13	6:00 p.m.	Parks, Rec. & Forestry Commission
18	5:00 p.m.	Municipal Court
	7:00 p.m.	Common Council Meeting
20	9:00-11:00 a.m.	Immunization Clinic
	6:30 p.m.	Celebrations Commission
25	5:00 p.m.	Municipal Court
	7:00 p.m.	Plan Commission



April 2005

4	7:00 p.m. (Mon.)	Common Council Meeting
5	7:00 a.m. to 8:00 p.m.	SPRING PRIMARY ELECTION
	5:00 p.m.	Municipal Court
7	2:30-5:30 p.m.	Immunization Clinic
11	5:00 p.m. (Mon.)	Municipal Court
12	4:45 p.m.	Library Board
	7:00 p.m.	Plan Commission
13	4:30 p.m.	Board of Health
	7:00 p.m.	Traffic & Safety Commission
	7:00 p.m.	Water & Sewer Utility Commission
14	6:00 p.m.	Parks, Rec. & Forestry Commission
19	5:00 p.m.	Municipal Court
	7:00 p.m.	Common Council Meeting
21	9:00-11:00 a.m.	Immunization Clinic
	6:30 p.m.	Celebrations Commission
26	5:00 p.m.	Municipal Court
	7:00 p.m.	Plan Commission



February 2005

1	5:00 p.m.	Municipal Court
	7:00 p.m.	Common Council Meeting
3	2:30-5:30 p.m.	Immunization Clinic
7	5:00 p.m. (Mon.)	Municipal Court
8	4:45 p.m.	Library Board
	7:00 p.m.	Plan Commission
9	4:30 p.m.	Board of Health
	7:00 p.m.	Traffic & Safety Commission
	7:00 p.m.	Water & Sewer Utility Commission
10	6:00 p.m.	Parks, Rec. & Forestry Commission
14	7:00 p.m. (Mon.)	Common Council Meeting
15	7:00 a.m. to 8:00 p.m.	SPRING PRIMARY ELECTION IF REQUIRED
	5:00 p.m.	Municipal Court
17	9:00-11:00 a.m.	Immunization Clinic
	6:30 p.m.	Celebrations Commission
22	5:00 p.m.	Municipal Court
	7:00 p.m.	Plan Commission



May 2005

3	5:00 p.m.	Municipal Court
	7:00 p.m.	Common Council Meeting
5	2:30-5:30 p.m.	Immunization Clinic
9	5:00 p.m. (Mon.)	Municipal Court
10	4:45 p.m.	Library Board
	7:00 p.m.	Plan Commission
11	7:00 p.m.	Traffic & Safety Commission
	7:00 p.m.	Water & Sewer Utility Commission
12	6:00 p.m.	Parks, Rec. & Forestry Commission
17	5:00 p.m.	Municipal Court
	7:00 p.m.	Common Council Meeting
19	9:00-11:00 a.m.	Immunization Clinic
	6:30 p.m.	Celebrations Commission
24	5:00 p.m.	Municipal Court
	7:00 p.m.	Plan Commission
30	CLOSED	MEMORIAL DAY HOLIDAY



NOTE: The dates and times listed in this *Acorn* calendar are considered tentative only and are subject to cancellation, changes or rescheduling. Please check with the City Clerk's Office at 768-6500 prior to attending.

WHAT'S NEW IN OUR PARKS - 2005

OAK LEAF BIKE TRAIL

The City of Oak Creek will participate with Milwaukee County in the construction of two components of the Oak Leaf Bike Trail System.

NORTH SHORE BOX CULVERT

Construction of a North Shore box culvert will allow bicycles to travel under Highway 100 when biking the North Shore-Oak Leaf Trail. The box culvert will be constructed as part of the Highway 100 reconstruction project in 2005-2006.

NORTH SHORE-ROOT RIVER EXTENSION

The Root River extension will be extended west to Howell Avenue in 2005.

SOUTH HILLS NEIGHBORHOOD PARK DEVELOPMENT

Look for development of the new park site located at 9299 S. 22nd Street in 2005. Allocated funding should allow development of all proposed facilities including an early childhood & school age play structures, swings, sledding hill, ballfield, playfield, basketball court, sand volleyball court, picnic shelter, parking lot & asphalt recreation trail. Thank you 6th District Alderperson Stephen Jonas for your involvement & support of this project.

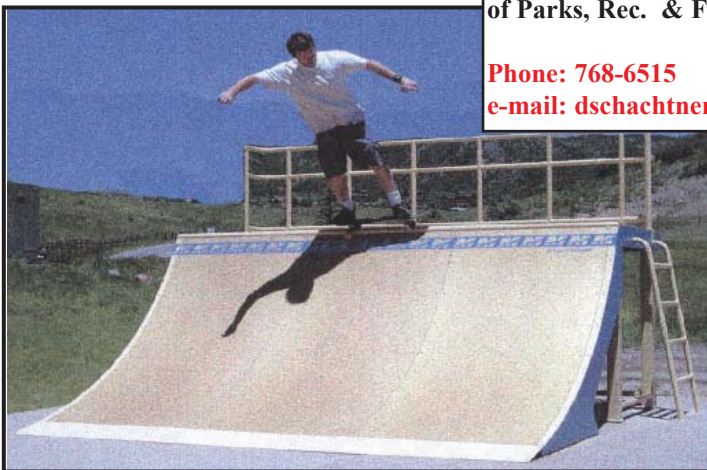
CAMELOT NEIGHBORHOOD PARK DEVELOPMENT

The development of the Camelot Park, 7385 S. Chapel Drive, is scheduled for 2005. Proposed Park site facilities include an early childhood & school age play structures, swings, ballfield, playfield, basketball court, parking lot and asphalt recreation trail. Thank you 1st District Alderperson Elizabeth Kopplin for your involvement & support of this project.

SKATE PARK

The Common Council allocated \$95,000 toward skate park modules & equipment for the proposed skate park at the East Middle School facility.

The Ad Hoc Skate Park Committee will finalize the skate park design by early 2005 and would like to see the skate park open for summer vacation.



SKATE PARK

- ▶ Want to know more?
- ▶ Want to be a part of this project?
- ▶ Want to get involved?
- ▶ Contact Doug Schachtner, Director of Parks, Rec. & Forestry at:

Phone: 768-6515

e-mail: dschachtner@oakcreekwi.org

COMMUNITY EDUCATION PROGRAM

COMMUNITY EDUCATION- MAKING A DIFFERENCE

Adult Education, an Oak Creek-Franklin Joint School District's Community Education program, is in its second year of offering evening adult education class within our school buildings. During the 2003-2004 school year, 37 adult education classes involved over 300 community members in adult evening classes. Don't wait to hear about it from your neighbors! Be a part of the excitement! Pick-up a Winter/Spring Adult Education catalog and join a class that interests you!

Winter/Spring Adult Education Catalogs can be found at the following locations:

M&I Bank-Oak Creek
Oak Creek Public Library
Oak Creek City Hall
Oak Creek Parks, Recreation and Forestry
Oak Creek Community Center
Oak Creek-Franklin Joint School District Schools
Community Education Office

* Winter/Spring Session Starts January 17th *

To register for classes: use the registration form included in the Community Education Catalog and send to the Oak Creek-Franklin Joint School District Community Education Office.



The Adult Education catalog and downloadable registration forms can also be found on the Oak Creek Franklin Joint School District website at:

www.oakcreek.k12.wi.us

If you would like to be added to the Community Education mailing list to ensure you receive up-to-date information on classes and events call (414) 768-6163 or visit the Community Education office located at 7630 South Tenth Street, Oak Creek WI.

Activity Line : The Community Education Activity Line is a recorded message system available to answer any and all programming questions:



COMMUNITY EDUCATION ACTIVITY LINE
(414) 768-6163

Adult Education offerings include classes, workshops and special events in the following areas:

Arts, Crafts and Do-It-Yourself

Scrapbooking
Photography
Knitting
Rubberstamping
Picture Framing and Matting
Basket Weaving
Home Organization

Finance & Investments



Home Buying
Managing your Retirement Income
Investment Workshop
Saving for College
Estate Planning

Computer Skills

Basic Computer
Microsoft Word
Microsoft Excel
Microsoft Access
Microsoft Publisher
Microsoft Power Point

Healthy Living and Wellness

Aromatherapy

Parenting and Family Education

Back by popular demand...

Love & Logic for Parents of Toddlers

Love & Logic for Parents of Teenagers

This is just a preview of what the Winter/Spring session offers. Pick up an Adult Education Catalog for additional course information and registration materials.

RECREATION GUIDE-Table of Contents

REGISTRATION MADE EASY.....42

GENERAL INFO. & FORMS

Age Requirements for classes/activities33

Fine Print-Things You Should Know.22

Points of Interest21

Registration Forms.....43 & 45

Facilities List: Parks, Playgrounds & Schools14

Map: Parks, Playgrounds & Schools15

Application Form/Comments.....44,46

Help Wanted.....back cover

SWIM

Aqua Fit.....26

Badge Night25

Lap Swim, Ages 16+.....23

Learn to Swim-Youth.....24-25

Open Swim.....23

Scuba25

HEALTH & FITNESS

Aerobics - Mother/Daughter27

Aerobics - Stepping Up.....26

Aqua Fit.....25

CPR & First Aid Certification28

Fit for the 50's.....28

Fitness Walking.....26

Yoga -NEW-.....26

YOU CAN: Steps to Healthier Aging -NEW-28

Walk It Off -NEW-.....27

KID STUFF

Aerobics - Mother/Daughter (8+)27

Arts & Crafts32

Baby-Sitting Course36

Baton32

Dance Program.....31

Hip Hop Dance-NEW-34

Drama32

Fitness Fun31

Mad Science37

Mite Sports -
(floor hockey, kickball, soccer, tennis)33

Tumbling33

YOUTH SPORTS

Free Throw Contest.....34

Golf (11-16).....35

Tennis (8+)35

Wrestling (Grades 1-8).....35

MARTIAL ARTS

TaeKwonDo.....34

FOREVER YOUNG CLUB (55+)29

THE SPORTS PAGE-ADULTS

Golf.....38

Open Weight Lifting (18+).....39

Open Basketball (18+)39

Softball Leagues.....38

Tennis38

MAD SCIENCE CAMPS-GRADES K-5

Mad Science-Jr. Engineers -NEW-.....37

Mad Science-The Wright Stuff -NEW-37

Mad Science-Detective Science -NEW-.....37

Mad Science-Science of Magic -NEW-37

TEEN ACTIVITIES

Babysitting Course-Ages 11+36

Hip Hop Dance -NEW-34

Volleyball (Middle School).....36

Open Basketball for Teens (Ages 11-15).....36

WINTER FUN

Oak Creek Day at Crystal Ridge.....40

Ski Lessons.....40

Snowboard.....40

Sledding.....41

Ice Rink41

SPRING PREVIEW

Youthball Program47

ACORN NEWSLETTER.....2-18

COMMUNITY EDUCATION PROGRAM....19

PARKS, RECREATION, & FORESTRY STAFF

Doug Schachtner, Director
 Mary Jane Trate-Recreation Supervisor
 Jeff Wendt- Parks Maintenance Supervisor
 Rebecca Lane-City Forester
 Debbie Lukasik-Secretary

**PARKS, RECREATION & FORESTRY
 COMMISSION MEMBERS**

- Janet Fluegel, Chairperson
- Marianne Dickmann, Secretary
- Ann Lampe, Council Representative
- Paul Sigler, School Representative
 - Patricia Glatch
 - Greg Lampe
 - Dan Jahn
 - Jennifer Wimmer

POINTS OF INTEREST

HOLIDAY SCHEDULE

Parks, Recreation and Forestry Department activities are cancelled on the following holidays:

Christmas & New Years

Thurs & Fri December 23 & 24

Thurs & Fri December 30 & 31

Easter Fri & Sat March 25 & 26

Memorial Day May 30

DEPARTMENT FUNDING

The Oak Creek Common Council provides revenue for Department operations during the year. Non-residents, therefore, are required to pay additional fees and/or charges for recreation activities.

ADVERTISING

The Oak Creek Parks, Recreation and Forestry Department would like to thank the businesses/organizations for their ads placed in this guide.

If you are interested in advertising in the Recreation Guide, contact the Parks, Recreation & Forestry Department office at 768-6516 for additional information.

EMPLOYMENT

PARKS, RECREATION & FORESTRY: Persons interested in working for Parks, Recreation and Forestry should contact the office at 768-6515 and request an employment application form. Applications are kept on file for one year. The Department will notify individuals when they are selected for employment. We are always interested in persons possessing special skills, such as instructors, coaches, officials, etc.

VOLUNTEERS: Persons interested in serving as volunteers are encouraged to contact the Recreation Supervisor to discuss how their services can be utilized.

CITY EMPLOYMENT: Persons interested in working for the City should visit the City's website at: www.oakcreekwi.org or contact Marie at the City Administrator's Office at 768-6591.

AMERICANS WITH DISABILITIES ACT

Pursuant to the Americans with Disabilities Act, the City of Oak Creek will make reasonable efforts to accommodate persons with disabilities in the provision of City services, programs or activities. If you require special accommodation in order to participate in a city parks/recreation program, please let us know when you register.

CONTACT US

OAK CREEK PARKS, RECREATION & FORESTRY:

Office Hours: Monday - Friday
8 AM - 4:45 PM

Office Phone: (414) 768-6515

Visit us at: www.oakcreekwi.org

Activity Tape: (414) 299-9721
Press 1 for General Information

Press 2 for Team Sports Information

Press 3 for Registration Information

SMILE



On occasion, our staff may take pictures of participants in our Parks, Recreation & Forestry programs. These pictures are for our future program brochures/bulletin boards.

CARPPOOLING REQUESTS

- Siblings who are registering for the same class section and/or league, will be placed together unless otherwise requested in writing by the parent or guardian.
- All other requests for persons to be placed together must be in writing; one request signed by the parents or guardians of BOTH parties requesting the carpool.
- Requests of placement together, other than siblings, are NOT guaranteed and will only be considered for groups of 3 or less unrelated persons.
- If placement with another person(s) is requested, it is understood that if one member of the group is placed on the wait list, ALL members of the group will be put on the wait list.

**The Acorn Recreation Guide &
City Newsletter is published three times
a year: mid-May
mid-August
mid-December**

Mark your calendar!

FINE PRINT: THINGS YOU SHOULD KNOW

IS SHE/HE OLD ENOUGH?

For all programs, **age requirement will be as of the date of the first class**, unless otherwise specified. Please do not request to have your child put in a class he/she does not belong in. All age requirements are set to benefit the children and make instruction more consistent for the program leader. In some instances, the requirements have been set for the child's safety.

WHO'S THE TEACHER?

The Recreation Department assigns the most qualified leaders available to all program activities. Your feedback regarding instructors/leaders is always welcome.

HOW MUCH IS IT?

The policy of the Department is that those who participate must help defray the overall cost of the activity. Fees and charges are assessed according to the needs of the program, such as leadership, equipment and supplies, etc.

Note:

The Department does not want to exclude children who are unable to pay these fees due to financial hardship. Any family unable to pay all or part of the fees or charges may contact the office. Arrangements will be made for their participation.

NEED TO TRANSFER?

Anytime a team or individual requests a transfer, and the Department can accommodate the transfer, a \$3 service charge will be payable to the Department.

There is no charge for transfers initiated by Department Instructors or for those accompanied by proof of the child passing/failing the previous class.

NEED A REFUND?

Refunds will be made upon request up until 1/3 of the scheduled classes have been held (i.e. 3 classes of a 10 week session) except as noted in individual class descriptions. You may expect your refund check 2 to 4 weeks after your request is received.

A \$3 service fee will be charged on each refund requested by an individual.

In the event an activity a person signs up for is cancelled, that person will have the option of a full refund or a transfer to another activity.

Overpayments must be picked up in the Parks, Recreation and Forestry Office within 2 weeks of notification to avoid forfeiture (under \$5) or a \$3 check processing fee (over \$5).

IS THERE CLASS TODAY?

If you have a question concerning the cancellation of a program (inclement weather, school closed, etc.) **CALL THE 24-HOUR INFORMATION LINE AT: (414) 299-9721**

It is sometimes necessary to cancel an activity due to school-related functions, weather, etc. Participants will be notified of cancellations as soon as possible.

Cancelled activities will be rescheduled if possible. If a class is unable to be rescheduled, no refunds will be issued.

CAN I WATCH?

In an effort to avoid distractions and interruptions in instruction, relatives, friends and/or other children are not permitted in classrooms or the pool during instruction.

We also feel it is most beneficial for your child to have recreational time with his/her peers, and for adults to have time in an adults-only atmosphere.

OPEN HOUSE:

You are welcome to discuss your child's progress after each class, and attend the open house held during the final class of the session.

HAVE A COMPLAINT?

If, after you begin a class it does not meet your expectations, please contact the Oak Creek Parks, Recreation & Forestry Department at 768-6515 to discuss your concerns.

DO YOU HAVE INSURANCE?

The Department does not provide hospital/medical insurance coverage for program participants. Nor does the School District provide hospital/medical coverage for Department sponsored activities on school property. Participants are encouraged to obtain their own insurance coverage for the duration of their activity from their own insurance agent.

WHERE DO I PARK-ENTER?

WEST MIDDLE SCHOOL: Southwest doors at back of school next to dumpster.

SHEPARD HILLS: North doors next to the playground.

CITY HALL: East doors closest to fire station.

HIGH SCHOOL: EAST ENTRANCE # 21 ONLY

AM I A RESIDENT?

A non-resident fee is set for most activities. The non-resident fee applies to any person whose primary residence is not within the Oak Creek city limits at the time of registration. Attendance in the Oak Creek-Franklin School District does not constitute residency. All individuals or groups registering in classes or activities must show proof of City residency such as a current State of Wisconsin driver's license, a current utility bill, etc. If proof of residency cannot be validated, the non-resident fee standards will be applied.

AMERICAN RED CROSS HAS REDESIGNED

the "Learn to Swim" Program used by all Red Cross Instructors and participating agencies. The changes include:

- The order in which skills are taught
- The names of the various levels
- The number of levels offered.



Persons new to the program should read the skill description for each level to determine their correct placement. If you have not

taken lessons prior to spring 2004, please enroll your child in the same class they completed last time.

Age and height requirements are set for the safety & welfare of the students! *Please do not ask for an exception.*



BEFORE YOU GET WET!

Only lifeguards and SWIMMERS are permitted in the pool area during SWIM INSTRUCTION & OPEN SWIM.

For safety reasons, flotation devices, including life jackets and other equipment and toys are not allowed during open swim.

Unexpected pool closings can occur. Always check to be sure the pool is open & has not reached maximum capacity before leaving children for open swim.

Locker room attendants are NOT on duty, however, locker room checks are made by pool staff. Locks left overnight may be removed at the discretion of the Department. The Department/School District is not responsible for any lost or stolen articles.

Average pool temperature: 80 degrees. Any fluctuation in temperature will be corrected as soon as possible. Temperature sensitive individuals may find the water cool.

PLACE: Sr. High Pool

ENTER: Enter through the east doors #21

Participants must provide their own suit (no substitutes allowed).

RED CROSS CERTIFIED SWIM

INSTRUCTORS: Amy Abitz-Akey, Lindsay Allard, Amy Hildebrandt, Dana Johnson, Carol Pultz, Kim Trate, Steve Trate, & Darrin Allard.

For further information contact the Recreation Office at: 768-6515

OPEN SWIM Jan. 13 - May 12

TUESDAY & THURSDAY 7:05 - 8:20 PM

Open Swim is held in the Oak Creek Senior High School Pool (east entrance #21) and is **FREE** to Oak Creek residents.

Call the activity tape at 299-9721 (press 1 when prompted) for possible additional hours or cancellations.

Note: All children under 6 years of age must be accompanied by an adult in the water (preferably a parent) during Open swim. Children under 2 years of age are not permitted in the pool during open swim.

Due to swim meets, open swim may open 1/2 hour to 1 hour late on the following dates, but will remain open until 9 PM:

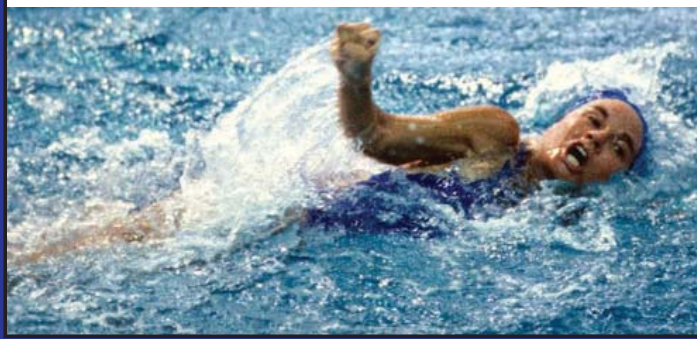
January 18, 25 & 27

Lap Swim - Ages 16+

8:20-9:05 PM Tuesday & Thursday

Note: NO children permitted in the pool area during Lap Swim

Cancelled Jan. 18, 25 & 27 due to swim meets.



"LEARN TO SWIM" PROGRAM (AGES 2-14)

Little Dippers Child & Parent

Ages 2 to 5 years will swim & play with a parent or other adult. Class will include adjustment to the water, games, basic swim movements & safety skills.

Note: Swimmers who are not toilet trained must wear a cloth diaper with TIGHT fitting plastic pants or commercially available "swim diaper". No "disposables" will be permitted.

ACT/SECT#	DAY	DATES	TIME
402001 B1	Sat	Jan. 22- Feb. 19	11:00 -11:30 AM
402001 B2	Sat	Feb. 26 - Mar. 19	11:00 -11:40 AM
402001 A1	Wed	Jan. 26 - Feb. 23	6:00 - 6:30 PM
402001 A2	Wed	Mar. 2 - Mar. 30	6:00 - 6:30 PM

FEE:

**Little Dippers (1 parent/1 child)
Resident \$13 / Non-Resident \$19.50**



Intro to Water Skills-Level 1



Six years old & up & is at least 42" tall.
For children with minimal or no previous swim lesson experience. No swim skills required.

ACT/SECT#	DAY	DATES	TIME
402011 A1	Wed	Jan. 26-Mar. 30	6:45- 7:30 PM

Intro to Water Skills-Level 1 With Parent

Ages 4 who have completed Little Dippers, Ages 5 & 6.
An Intro to Water Skills class for children who do not meet the height or age requirements listed above. One parent per child please.

ACT/SECT#	DAY	DATES	TIME
402011 C1	Sat	Jan. 22-Mar. 19	12:00- 12:50 PM

SWIM FEES:

DIPPERS Classes (1 parent/1child)
Resident \$13.00 / Non-Resident \$19.50

Other Classes "WITH PARENT"
(1 parent/1 child)
Resident \$26 / Non-resident \$39

All other Classes
Resident \$22 / Non-resident \$33

Fundamental Aquatic Skills-Level 2

For students who meet age & height requirements for **Intro to Water Skills** and:

Passed (during summer/fall 2004) Level 1 or can move 5 yards, bob 5 times exhaling underwater, and exit water. Float on front with support, roll to back and float on back. Swim on front & back 10 feet.

ACT/SECT#	DAY	DATES	TIME
402021 B1	Sat	Jan. 22 - Mar. 19	10:00 - 10:50 AM
402021 B2	Sat	Jan. 22 - Mar. 19	11:00- 11:50 AM
402021 A2	Wed	Jan. 26 - Mar. 30	6:45 - 7:30 PM
402021 A3	Wed	Jan. 26 - Mar. 30	7:30 - 8:15 PM

Fundamental Aquatic Skills-Level 2 With Parent

Ages 4 who have passed Intro to Water Skills, Ages 5 & 6 who do not meet height or age requirements for classes without parent and have the swim skills listed above. One parent per child please.

ACT/SECT#	DAY	DATES	TIME
402021 C1	Wed	Jan. 26 - Mar. 30	6:00 - 6:45 PM



Stroke Development-Level 3

Swimmers who meet height & age requirement for classes without parent or who have passed Level 2 with or without parent (during summer/fall 2004). Must be able to step into chest deep water, front float 5 seconds, roll over to a back float, back float 5 seconds, front glide and swim 10 yards on front & back, tread water, submerge head.

ACT/SECT#	DAY	DATES	TIME
402031 B1	Sat	Jan. 22 - Mar. 19	10:00- 10:50 AM
402031 A1	Wed	Jan. 26 - Mar. 30	7:30- 8:15 PM



Stroke Improvement-Level 4

Swimmers who have previously passed **Level 3** (summer/fall 2004) or can jump into deep water, front crawl 20 yards (face in) with rhythmic breathing, tread water or float 30 seconds, swim back crawl 20 yards. Demonstrate butterfly 15 feet.

ACT/SECT#	DAY	DATES	TIME
402041 B1	Sat	Jan. 22 - Mar. 19	12:00 - 12:50 PM
402041 A1	Wed	Jan. 26 - Mar. 30	6:00 - 6:45 PM

SWIM, SCUBA, AQUA FIT, BADGE NIGHT

Stroke Refinement-Level 5

For those who have previously passed Level 4 (summer/fall 2004) or who can jump in, swim front crawl with rotary breathing 25 yards, back float 1 minute in deep water, swim elementary backstroke 15 yards. Swim breaststroke 15 yards, tread water for 1 minute, breaststroke for 25 yards, butterfly and side-stroke 15 yards

ACT/SECT#	DAY	DATES	TIME
402051 A1	Wed	Jan. 26-Mar. 30	7:30 -8:15 PM

Lifeguard Readiness-Level 6

For those who have previously passed Level 5 (summer/fall 2004) or who can shallow dive in deep water, swim 50 yards front crawl, flip turn, float 2 minutes in deep water, elementary backstroke 25 yards, breaststroke 25 yards, tread water 2 minutes with breaststroke kick, scissors kick or rotary kick, backcrawl 50 yards with flip turns. Butterfly 25 yards, do tuck and pike surface dives, underwater swim 15 yards.

ACT/SECT#	DAY	DATES	TIME
402061 A1	Wed	Jan. 26-Mar. 30	6:45 - 7:30 PM

NO SWIM CLASSES ON: SATURDAY, MARCH 13

Badge Night

Wednesday, April 13 - 6:30 PM to 8 PM



Scouts and youth group members will have the opportunity to work on badges, pins and advancement requirements. A leader or adult must attend, supervise and work with each group and all persons in the pool. **NO INSTRUCTORS OR BADGE COUNSELORS WILL BE AVAILABLE.** Lifeguards will be on duty and reaching poles, ring buoys and life jackets will be available. Non-registered brothers, sisters, friends, etc. will be asked to wait in the hall. This is not a family open swim! Please do not bring more adults than needed to work with your group.



BRING: Towel, swim suit, mask, fins, snorkels if needed, lock for locker

PLACE: Sr. High Pool

ENTER: Use East Entrance #21 only

ACTIVITY#: 102006 A1

FEE: \$1 per scout/youth group members
Leaders are free

NOTE: Swim attire required of ALL persons in the pool.



SCUBA DIVING COURSE

(Adults & Youth 12 & Up)

Class will be instructed by Pirate's Cove.

Open water certification will be issued to persons who complete the classroom, pool & four open water dives successfully. Interested participants should register with the Parks & Recreation Department using the form included in this book.

The class instruction fee includes books, equipment, classroom, pool & open water instruction, however participants must provide their own mask, fins, snorkel and wetsuit boots. Purchase information for above items may be obtained from Pirate's Cove or from the instructor at the first class. Any questions, call:

Pirate's Cove at 482-1430.

ALL participants must pass a water test which will be given during the first pool session.

DATE: Thursdays February 3 - March 10, 2005

TIME: 6 PM to 9 PM

PLACE: Sr. High Pool & Art Room

INSTRUCTOR: Pirate's Cove staff

ACTIVITY/SECTION #: 403502 A1



FEES:

\$35 Class Registration Fee - paid prior to first class to Oak Creek Parks, Recreation & Forestry

\$225 Instruction Fee - paid to instructor-entire amount at first class or \$125 at first class and \$100 prior to open water dives.

\$25 Optional video fee-paid to instructor-refundable if returned prior to open water dives in good condition.

AQUA FIT (10 weeks)

ADULTS & TEENS 16+

Aqua Fit consists of swim activities/exercises held in the



Senior High Pool. NO SWIM SKILLS ARE REQUIRED for this water fitness class. Toning & aerobic exercises will be introduced.

ACT/SECT#	DAY	BEGINS	TIME
406511 A1	Tues	Feb. 1	6 - 7 PM
406511 A2	Thurs	Feb. 3	6 - 7 PM

PLACE: Sr. High Pool

ENTER: Use East Entrance #21 only

INSTRUCTOR: Cynthia Lynch & Sally Plemons

FEE: Residents \$36 / Non-residents \$54

HEALTH & FITNESS

STEPPING UP AEROBICS

ADULTS & TEENS 16+

Get ready to step-up & take charge of those under worked thighs, hips & abdominal muscles! Participants should wear comfortable aerobic/fitness shoes. Bring a towel or mat for warm-up/cool-down. Steps provided. Please let us know if you have your own.



Beginners: (10 weeks)

Get started on your way to better fitness. Class is designed for those who haven't exercised in a while or need an easier pace.

<u>ACT/SECT#</u>	<u>DAY</u>	<u>BEGINS</u>	<u>TIME</u>
406501 B1	Mon	Jan. 24	7:30 - 8:30 PM

Advanced Beginners: (10 weeks)

The next step, if you'll pardon the pun. We recommend that participants have some recent exercise experience before taking this class.

<u>ACT/SECT#</u>	<u>DAY</u>	<u>BEGINS</u>	<u>TIME</u>
406501 A1	Thurs	Jan. 27	7:30 - 8:30 PM

PLACE: Sr. High Choir Room

ENTER: East Entrance #21 Only

INSTRUCTOR: Sally Plemons

FEE: Residents \$36 / Non-residents \$54

**No class
Feb. 17**

WE'RE SORRY--

Children are not allowed to attend adult classes! As much as we love them, we have found that adult classes are too long for children to wait quietly and they often cause disruptions in class. Please make other arrangements for their care while you are enjoying your class.



REMINDER-Those who are over 40, overweight, or who haven't exercised recently should consult their doctor before beginning any exercise program.

YOGA

ADULTS/TEENS AGE 16+ (8 Weeks)



Stressed? Relax your mind and increase your strength and flexibility with Yoga. This beginner level class will teach you basic level breathing techniques and a variety of Yoga postures.

<u>ACT/SECT#</u>	<u>BEGINS</u>	<u>DAY</u>	<u>TIME</u>
406501 D1	1/27	Thurs	6-7:30 PM

PLACE: Sr. High Choir Room

INSTRUCTOR: Anna Bauer-Baxter

BRING: Towel or mat & water bottle

FEE: \$36 Residents / \$54 Non-residents

**No class
Feb. 17**



FITNESS WALKING

MON.-FRI. 6-8:30 PM - AGES 16+

Register for the Fitness Walking Club
Stay in shape this winter.



- * T-shirt required (Walkers may continue using current shirt)
- * Walk 10-12 hours a week
- * *Option:* Earn milestone certificates
- * Enjoy the motivation of belonging to a group

REGISTRATION--OPENS IMMEDIATELY:

Semester registration accepted at the Recreation Office by fax, phone-in or mail. Daily registration accepted at Recreation Office or at check-in desk.

January 3 to April 8

<u>Resident</u>	<u>Non-Resident</u>	<u>Act./Sect#</u>
\$18.00	\$24.50 includes new shirt	502021 F2
\$12.00	\$18.00 using Spring/Fall '04 shirt	

Daily fee (wristband only). ID required.

<u>Resident</u>	<u>Non-Resident</u>	<u>Act./Sect#</u>
\$1.50	\$2.00	502021 DW

CLOSED: February 17., March 2 & March 25

PLACE: Sr. High 2nd floor hallways. Use east entrance #21 only.

HEALTH & FITNESS

MOTHER/DAUGHTER AEROBICS

Ages 8+ with Parent or Other Adult (8 weeks)

Get in shape & enjoy a girls night out! Rhythmic exercises set to music will provide both moms & daughters a fun way to work out & spend time together. Participants should wear aerobic/fitness shoes & loose clothing or exercise wear. Bring a towel or mat for warm-up/cool-down.



<u>ACT/SECT#</u>	<u>DAY</u>	<u>BEGINS</u>	<u>TIME</u>
406501 C1	Mon	Jan. 24	6 - 6:45 PM

PLACE: Sr. High Choir Room

ENTER: Use East Entrance #21 Only

INSTRUCTOR: Sally Plemons

Note: Maximum 2 children per adult

FEE: Residents- \$18 Per Person
Non-residents-\$27 Per Person

WALK IT OFF

**ADULTS & TEENS AGE 16+ (10 WEEKS)
BEGINS JANUARY 24**

Walk your way to fitness with our low impact, fun, and convenient workout. We'll be walking in place using a variety of steps and intervals of toning exercises to shape you up. Walking is a great addition to everyone's exercise routine and the pace is easily adjusted for beginners or more advanced exercisers.



<u>ACTIV/SECT#</u>	<u>BEGINS</u>	<u>DAY</u>	<u>TIME</u>
406501 B2	Jan. 24	Mon	6:45-7:30 PM

PLACE: Sr. High Choir Room

INSTRUCTOR: Sally Plemons

FEE: \$27 Residents / \$40.50 Non-residents

BRING: Towel or mat & water bottle



USA TaekwonDo



At **USA TKD** we teach families real self defense techniques. Our super-charged curriculum goes far beyond just tournament style, sparring and forms. At **USA TKD** families make the right choice by training under an instructor who has the superior knowledge, skill, compassion and drive to help every single student achieve their personal best. At **USA TKD** classes are not overcrowded. We add more classes as needed to ensure we never get overcrowded and lose focus. At **USA TKD** all students receive their own personal training guide for home study and to keep parents current on their child's progress. At **USA TKD** we do not adhere to the usual belief that only Korean arts are the useful ones. At **USA TKD** diversity is our unmatched strength. We find useful techniques from Japan, Brazil, Korea and, of course, the good 'ole USA. Our students develop the confidence and focus to defend themselves plus the respect to never misuse the awesome power we develop. At **USA TKD** you will get the best training around...period. Make the Right Choice! Join our winning team at **USA TKD** and let Master Lowes' 31 years mixed martial arts training or astounding 21 years working with families and children help you and your family achieve your goals! **Guaranteed.**

Sincerely, *Master James Lowe*

The RIGHT Choice!

**USA TKD
is #1 in
Oak Creek**



**Lil
Dragons
Class--**

**Our
youngest
family
members!**



**2 Private
Lessons! \$19.95**

(414) 571-1312

2151 E. Rawson Ave.-Tower Square

HEALTH & FITNESS



FIRST AID & ADULT/CHILD/INFANT CPR

Activity/Sect#	DAYS/DATES	TIME
406512 B1	Sat. Feb. 26	8:00 AM-3:00 PM

Participants must arrive on time, but may leave at any time after completing the certifications needed.

PLACE: Oak Creek City Hall-Lower Level Conference Room-use east entrance

INSTRUCTOR: June Van Pinsker

FEE: \$ 15 Residents / \$22.50 Non-Residents

NO REFUNDS ONCE CLASS HAS STARTED

ADULT/CHILD/INFANT CPR

Activity/Sect#	DAYS/DATES	TIME
106512 B2	Sat. Mar. 19	8:00 AM-3:00 PM

Participants must arrive on time, but may leave at any time after completing the certifications needed.

PLACE: Oak Creek City Hall-Lower Level Conference Room-use east entrance

INSTRUCTOR: June Van Pinsker



FEE: \$ 10 Residents / \$15 Non-Residents

NO REFUNDS ONCE CLASS HAS STARTED

HEALTH & FITNESS-Age 50+

YOU CAN: Steps to Healthier Aging AGES 50+ (12 WEEKS) BEGINS APRIL 5

- **Improve your mood and relieve anxiety!**
- **Strengthen bones and help prevent falls!**
- **Help manage your weight!**
- **Make new friends and have fun!**

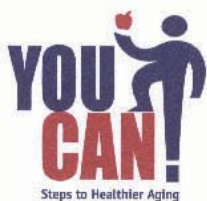
The You Can! Steps to Healthier Aging campaign encourages Americans to make healthier choices by eating better and getting regular physical activity. Learn how to manage your weight, improve moods, reduce stress, increase strength, and lower the risk of chronic disease.

ACTIV./SECT#	BEGINS	DAY	TIME
106901 A1	April 5	Tues	11:15-11:45AM

PLACE: Senior Day Rm-Oak Creek Community Center

FEE includes pedometer:

- \$17 OCPRF Forever Young Club Mbr
- \$21 Resident, non-member
- \$24 Non-resident, non-member



FIT FOR THE 50's Ages 50+



Strength training, nutrition and healthy eating for ages 50+? Absolutely! Strength training helps keep you young by helping you maintain muscle mass. You'll combat osteoporosis, improve posture and burn more calories. Class will include light weight training and nutrition education.

SESSION 1 (6 weeks): *Non-resident/non-member registration opens January 10 for this session.

ACTIVITY/SECT#	BEGINS	DAY	TIME
406901 C1	Jan. 18	Tu/Th	10-11 AM

SESSION 2 (6 weeks):

ACTIVITY/SECT#	BEGINS	DAY	TIME
106901 C1	Mar. 8	Tu/Th	10-11 AM

PLACE: Senior Day Rm-Oak Creek Community Center

INSTRUCTOR: David West

FEE PER SESSION:

- \$12 OCPRF Forever Young Club Member
- \$14 Oak Creek residents-non-members
- \$21 Non-resident-non-member

Note: You must register at the Rec. Office (inside City Hall) prior to attending.

FOREVER YOUNG CLUB-55 & BETTER

MEMBERSHIP- NEW MEMBERS WELCOME!

OFFICE HOURS: Visit or call Georgene Gabelbauer, Program Coordinator, Mon.-Thurs Noon to 2:15 PM at (414) 768-5850 *or* call the Parks & Rec. Office, 8 AM to 4:45 PM at (414) 768-6515 to leave a message.

MEMBERSHIP "BENEFITS ARE ENDLESS":

- Priority registration for activities
- Activities just for members.
- Monthly newsletter
- Discounts on special events, classes & field trips.

MEMBERSHIP ELIGIBILITY:

1. An Oak Creek Resident (unless a limited non-resident membership vacancy is available)
2. Be at least 55 years of age.
3. Able to care for self or accompanied by a caregiver.
4. Complete necessary membership information forms.
5. Submit payment of 2005 dues - \$7

ACTIVITIES:

- Volunteer Opportunities
- Craft classes
- Blood pressure monitoring
- Fundraisers
- Guest speakers
- Foot/hand care clinics
- Luncheon Club

CLASSES:

- Crafts
- Computer Classes
- Fit for the 50's Weight Training*
- YOU CAN! Program for Healthier Aging*

* classes marked with an asterisk are listed in this recreation guide. Registration procedures found on Pg. 42

EVENT SCHEDULE

All activities are held at the Oak Creek Community Center, 8580 S. Howell Avenue, Oak Creek (unless otherwise stated.)

CARD SOCIAL & BUSINESS MEETING:

The ever-popular card social/business meeting is held each Monday from 10 AM to 2:30 PM.

Hot Lunches available to members for only \$1.50/person.



St. Patrick's Gala-Thurs. March 17

Highlights: buffet luncheon, entertainment, door prizes & "Luck of the Irish" raffle. Fee to be determined

Lincolnshire Marriott Theatre-Wed. April 13

Highlights: deluxe motorcoach transportation, sit down luncheon, "Swing" the musical. Fee to be determined.

SOCIAL SERVICE INFORMATION:

- SeniorCare Application
- Reference Materials, Informational Speakers

Programs Under Construction

"AFTER HOURS" CLUB: Social & recreational opportunities for working adults 55+ or those who prefer the nightlife (fine dining, theatrical presentations, sporting events and more...)

"WHAT'S HAPPENING" RESOURCE CENTER: Up-to-date information on activities and programs offered throughout the community for those 55+

"GIFTS FROM THE HEART" VOLUNTEER PROGRAM

HEALTHY LIVING & WELLNESS EDUCATION

TRAVEL OPPORTUNITIES: One-day and extended trips and tours



Pictured: Seniors participating in the Fit for the 50's Class. See Pg. 28 for details.



GymRunners (parent/child) 14 - 28 months

This class is designed for those active toddlers! Language skills, confidence & coordination grow as we explore concepts like “Big & Little” and “Loud & Quiet” each week using Gymboree’s fun-filled movement activities, equipment, songs & games. We’ll top it all with exciting parachute play and, of course, lots of bubbles!

<u>DAY</u>	<u>TIMES</u>	<u>DATES</u>	<u>ACTIV./SECT#</u>
Wed	6:00-6:30 PM	1/26-3/2	404012 C1
Wed	6:40-7:10 PM	3/16-4/20	104012 A3

PLACE: Sr. High Wrestling Room-use east entrance #21

FEE per session: \$ 39 residents / \$ 41 Non-residents
(Fee includes 1 child and 1 parent)



GymWalkers (parent/child) 10 to 18 months

Once your child is pulling themselves to a standing position, he/she is ready for GymWalkers! Build trust and confidence while improving balance, coordination, and strength working on our specialized pieces of equipment. With plenty of parachute play, songs, games & bubbles you are sure to have a fun & memorable time together!

<u>DAY</u>	<u>TIMES</u>	<u>DATES</u>	<u>ACTIV./SECT#</u>
Wed	6:00-6:30 PM	3/16-4/20	104012 B2

PLACE: Sr. High Wrestling Room-use east entrance #21
FEE: \$ 39 residents / \$ 41 Non-residents
(Fee includes 1 child and 1 parent)



Half Notes (parent/child) 16-30 months

Introduce your child to the building blocks of music. This creative class is an exciting way to stimulate language development and to enhance social interaction. We’ll review a different musical style each week including “Rock N Roll” and “Rhythm & Blues” through movement activities, instrument play, games, songs and lots of dancing!

<u>DAY</u>	<u>TIMES</u>	<u>DATES</u>	<u>ACTIV./SECT#</u>
Wed	6:40-7:10 PM	1/26-3/2	404009 B1

PLACE: Sr. High Wrestling Room-use east entrance #21

FEE: \$ 39 residents / \$ 41 Non-residents
(Fee includes 1 child and 1 parent)



GymExplorers (parent/child) Age: 2 years

Imagination takes center stage in this exciting class. Enhance your child’s listening skills, social development, body awareness and confidence using games, songs and specialized equipment to make themes like, “When I Grow Up” and “Dinosaur Day” come to life! Add parachute play and lots of bubbles for a great time together!

<u>DAY</u>	<u>TIMES</u>	<u>DATES</u>	<u>ACTIV./SECT#</u>
Wed	7:20-7:50 PM	3/16-4/20	104012 C3

PLACE: Sr. High Wrestling Room-use east entrance #21

FEE: \$ 39 residents / \$ 41 Non-residents
(Fee includes 1 child and 1 parent)



Whole Notes (parent/child) Age: 2-1/2 to 5 Years

Imagination, listening skills, self-esteem and social skills get a real boost as your child explores different musical styles like “Polka” and “Broadway”. You’ll both have a great time engaging in songs, finger plays, games, instrument play and specially designed movement stories!

<u>DAY</u>	<u>TIMES</u>	<u>DATES</u>	<u>ACTIV./SECT#</u>
Wed	7:20-7:50 PM	1/26-3/2	404009 B2

PLACE: Sr. High Wrestling Room-use east entrance #21

FEE: \$ 39 residents / \$ 41 Non-residents
(Fee includes 1 child and 1 parent)

IS MY CHILD OLD ENOUGH?

For all programs, **age requirement will be as of the date of the first class**, unless otherwise specified.



Please do not request to have your child put in a class he/she does not belong in. All age requirements are set to benefit the children and make instruction more consistent for the program leader. In some instances, the requirements have been set for the child’s safety. **Proof of date of birth is required. See page 42 for details.**

KIDS STUFF

DANCE PROGRAM BALLET - TAP - JAZZ AGES 4 & UP



Let's move to the beat! Dance fundamentals geared toward the young student. Combo classes will include basic dance steps and rhythms used in ballet, tap and jazz. *Children must be toilet-trained.*

COMBO (5 weeks)

ACT/SECT#	DAY	AGES	DATES	TIME
404009 A1	Sat	4-5	2/5-3/5	8:30- 9:15 AM
404009 A2	Sat	4-5	2/5-3/5	9:15-10:00 AM
404009 C1	Sat	6+	2/5-3/5	10:00-10:45 AM
104009 A3	Sat	4-5	3/12-4/16	8:30- 9:15 AM
104009 A4	Sat	4-5	3/12-4/16	9:15-10:00 AM
104009 C2	Sat	6+	3/12-4/16	10:00-10:45 AM

Wear: Dance shoes not required for combo classes. Please wear t-shirt and shorts, sweats or plain leotard and tights. Due to high demand, only 1 session per child. Please request wait list for 2nd session if desired.

FEE PER SESSION-COMBO: \$10 Resident / \$15 Non-resident

No class on March 26

BALLET, TAP & JAZZ CLASSES** Wednesdays: begins Jan. 26 (8 weeks)

**Students who have previously taken combo class or other prior classes may focus on a particular dance style in the following classes. (Children age 4 MUST take combo class)

ACT/SECT#	DAY	AGES	CLASS	TIME
404019 A1	Wed	5-6	Ballet	6:00-6:30 PM
404029 A1	Wed	5-6	Tap	6:30-7:00 PM
404019 B1	Wed	6+	Ballet	7:00-7:30 PM
404029 B1	Wed	6+	Tap	7:30-8:00 PM
404039 B1	Wed	6+	Jazz	8:00-8:30 PM

FEE PER SESSION-BALLET, TAP OR JAZZ:

\$11 Resident / \$16 Non-resident

Wear: Tap and/or ballet shoes recommended. Please wear t-shirt and shorts, sweats or plain leotard and tights.



PLACE: Sr. High Choir Room

ENTER: Use east entrance #21 only

INSTRUCTOR: Amy Geiger



No class on March 2

Our teachers are the difference. Your child is our priority.

- College degrees in Elementary Education and/or Early Childhood Education
- Professional preschool program with educational themes and units
- Qualified and friendly staff with experience
- Licensed for ages 2-12

Schedule a tour today!

EARLY CHILDHOOD EDUCATIONAL CENTER
8630 S. Shepard Avenue, Oak Creek, Wis.
(across the street from Edgewood Elementary School)
(414) 571-6949 • www.ececkids.com

FITNESS FUN-AGES 3-6

Boys & girls will be participating in exercises, creativity, rhythm and balance activities such as dances, games, ball-relays, etc. Wear comfortable play clothing. *Children must be toilet-trained.*

Session I: Thursdays (Jan. 27 to Feb. 24) 5 wks.

Time	Age	Activity / Section #
6:00 - 6:45 PM	3 & 4	404012 A1
6:45 - 7:30 PM	4 & 5	404012 B1

Session II: Thursdays (March 17 to April 14) 5 wks.

Time	Age	Activity / Section #
6:00 - 6:45 PM	3 & 4	104012 A1
6:45 - 7:30 PM	4, 5 & 6	104012 B1

PLACE: Shepard Hills Gym, enter using north doors next to the playground

INSTRUCTOR: Kaela Zielinski

FEE PER SESSION:

Residents \$15

Non-residents \$22.50



KIDS STUFF



ARTS & CRAFTS

Ages 4 to 8 (8 weeks)



Participants will be creating a variety of arts and crafts activities. All supplies and materials provided. Wear old clothes or bring a smock.

Session 1: Mondays, Jan. 24-Feb. 21

Time	Age	Activity / Section #
6:00 - 6:45 PM	4-5	404002 A1
7:00 - 7:45 PM	6-8	404002 B1

PLACE: Sr. High Art Room

ENTER: East Entrance #21 only

INSTRUCTOR: **Qualified Instructor Needed**

FEE PER SESSION: Residents \$ 14 /Non-residents \$21



DRAMA

GRADES K - 6 (8 WKS)
JANUARY 25 - MARCH 15

Get ready to take the stage! This class will use games and activities to introduce basic theatre techniques and is recommended for those interested in our Summer Theater program. The final class may include a short skit or demonstration, however our play production is scheduled for the summer session.



GRADE	DAY	TIMES	ACT./ SECT. #
K-3	Tues	6-6:45 PM	404011 A1
3-6	Tues	7-7:45 PM	404011 B1

INSTRUCTORS:

PLACE: Sr. High Choir Rm.

FEE: \$14 residents / \$21 non-residents

BATON

AGES 3 & UP



Have you ever wanted to twirl a baton like they do in parades? Come give a twirl & learn the basics of baton. Try some tricks like an off-the-thumb toss or a Jack-in-the-Box Jump! Discover what an airplane spin is too!

SATURDAYS, Jan. 22-Mar. 19 (8 wks.)

No class January 29

TINY TOTS (AGES 3 - 6)

(Reminder: Students are NOT accompanied by parents during class sessions. *Children must be toilet-trained.*)

DAY	TIMES	ACTIVITY / SECT#
Sat	10:30-11:15 AM	404010 B1

AGES 7+ UP

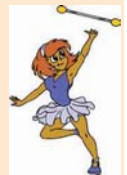
Children will be introduced to basic baton twirls & tricks.

DAY	TIMES	ACTIVITY / SECT #
Sat	11:15 AM-Noon	404010 A1

PLACE: Sr. High High Balcony

ENTER: Use east entrance #21 only

INSTRUCTOR: Sue Piekarski



FEE: Residents \$18 / Non-residents \$27

NOTE: The instructor will have information on purchasing batons at the first class.



Check out the sledding & ice rink info. on page 41

KIDS STUFF



MITE SPORTS AGES 4-7



Introductory sports programs for 4 to 7 year old players. Four and five-year old participants concentrate on learning basic skills, six and seven-year olds will practice basic skills and increase their understanding of the rules of the game and proper play. Everyone will have a chance to participate in some "just for fun" scrimmages. Fun, learning and good sportsmanship are stressed at all times. *Children must be toilet-trained.*

Floor Hockey-Session I Sats., Jan. 22 - Feb. 26 (6 weeks)

Time	Age	Activity / Section #
9:45 - 10:30 AM	4 & 5	404013 A1
9:00 - 9:45 AM	6 & 7	404013 B1

Session II Sats., March 12 to April 23 (6 weeks)

	Time	Age	Activity / Section #
Kickball	9:45-10:30	4 - 6	104013 A1
Soccer	9:00- 9:45	4 & 5	104013 B1

Mr. Pee Wee

Tennis	10:30-11:15	6 - 7	104013 C1
--------	-------------	-------	-----------

- No class March 26 -

PLACE: Shepard Hills School Multi-Purpose Rm
ENTER: Please enter through north (playground) doors

COORDINATOR: Darin Grabowski



FEE PER 6 WEEK SESSION:

Residents \$18 / Non-residents \$27

IS SHE/HE OLD ENOUGH?



For all programs, **age requirement will be as of the date of the first class**, unless otherwise specified.

Please do not request to have your child put in a class he/she does not belong in. All age requirements are set to benefit the children and make instruction more consistent for the program leader. In some instances, the requirements have been set for the child's safety.

TUMBLING

AGES 4 & UP



Twist, turn, stretch, roll & jump!

Tumbling is a fun way to explore muscle control while building upper body strength, coordination and balance.

• **Dress:** Please wear a leotard or t-shirt and shorts or sweats. No jewelry, or clothing with zippers or belt buckles. Long hair should be tied up. Shoes may not be worn in the wrestling room.

TAILS OVER WHISKERS



Beginning tumbling and balance skills for children ages 4 & 5. Reminder: Students are not accompanied by parents during class sessions. *Children must be toilet-trained.*

Session I: January 31 - March 7 (6 weeks)

Tails Over Whiskers (Ages 4 & 5)

DAY	TIMES	ACTIVITY / SECTION #
Mon.	6:00 - 6:45 PM	404005 A1
Mon.	6:45 - 7:30 PM	404005 A2

Session II: March 21 - April 25 (6 weeks)

Tails Over Whiskers (Ages 4 & 5)

DAY	TIMES	ACTIVITY / SECTION #
Mon.	6:00 - 6:45 PM	104005 A1
Mon.	6:45 - 7:30 PM	104005 A2

BEGINNERS

Open to children ages 5 and up who show an interest in learning tumbling. No skill ability is required.

Session I: January 31 - March 7 (6 weeks)

Beginners (Ages 5 & up)

DAY	TIMES	ACTIVITY / SECTION #
Mon.	7:30 - 8:15 PM	404005 B1

Session II: March 21 - April 25 (6 weeks)

Beginners (Ages 5 & up)

DAY	TIMES	ACTIVITY / SECTION #
Mon.	7:30 - 8:15 PM	104005 B1

PLACE: Sr High Wrestling Room

ENTER: Use east entrance #21 only

INSTRUCTOR: **Qualified Instructor Needed**

FEE: Residents \$18 / Non-residents \$27

KIDS STUFF

2005 COMMUNITY BASKETBALL FREE THROW CONTEST



- * Coming to Oak Creek in early February 2005.
- * Watch for flyers in mid-January!
- * Date, time and location to be determined.

HIP HOP / FUNK DANCE CLASS

AGES 8 TO 12, AND 13 & UP
JANUARY 22 - FEBRUARY 12

Get ready to HYPE IT UP in the popular Hype Cheer & Dance, Inc. Hip Hop/Funk Dance class. Learn a combination of jazz and hip hop/funk dance routines to popular pop and hip hop songs you hear in videos and on the radio. This class is for participants on all different dance levels with no previous dance experience requires, just a desire to dance, learn, have fun and have a great workout.

ACT/SECT#	DAY	AGES	TIME
404049 A1	Sat	8-12	11 AM to 12 NOON
404049 A2	Sat	13+	12:05-1:05 PM

INSTRUCTORS: Hype Cheer & Dance. All instructors have high school to college and/or professional dance experience.

LOCATION: Sr. High Wrestling Room

ENTER: Use east entrance #21 only

FEE: \$25 resident / \$29 non-resident



TAEKWONDO

AGES 6.5 THRU ADULTS

Tae Kwon Do isn't only about punching & kicking. It teaches the ancient values of honor, respect and perseverance. Tae Kwon Do is truly a "Way of Life" sport.

BEGINNER

New students, white & high white belts. It is recommended that beginners take both the Tuesday & Thursday classes.

BEGINS January 11 or 13 (8 weeks)

Day	Time	Yth. Act/Sect#	Adlt. Act/Sect#
Tues	6:30-7:30 PM	404306 C1	404306 C2
Thurs	6:30-7:30 PM	404306 C3	404306 C4

BEGINS March 22 or 24 (8 weeks)

Tues	6:30-7:30 PM	104306 C1	104306 C2
Thurs	6:30-7:30 PM	104306 C3	104306 C4

ADVANCED BEGINNER

Students with yellow belts & above.

BEGINS January 11 (8 weeks)

Day	Time	Yth. Act/Sect#	Adlt. Act/Sect#
Tu & Th	7:30-8:30 PM	404306 D1	404306 D2

BEGINS March 22 through May 12 (8 weeks)

Day	Time	Yth. Act/Sect#	Adlt. Act/Sect#
Tu & Th	7:30-8:30 PM	104306 D1	104306 D2

- NO CLASS JANUARY 20 -

PLACE: Sr. High Wrestling Room

ENTER: East Entrance #21 ONLY

INSTRUCTOR: John Wellstein, 2nd Degree Black Belt

ASSISTANT: Rebecca Jacob, Black Belt

CURRICULUM COORDINATOR: Master James Lowe
5th Degree Black Belt, USA Taekwondo, 31 yrs experience

FEE: Beginner (Once per week per session)

\$20 Youth / \$30 Adult Resident
\$30 Youth / \$45 Adult Non-Resident

Adv Beginner (Twice per week per session)

\$40 Youth / \$60 Adult Resident
\$60 Youth / \$90 Adult Non-Resident

OTHER FEES:

- Dobok (uniform) is required. Cost: \$40 youth, \$45 adult. Instructor will have sizing/ordering information at first class.
- Testing and/or protective sparring gear as students advance.

Registration opens immediately!!

KIDS STUFF

YOUTH WRESTLING

BOYS & GIRLS - GRADES 1 - 8 (8 weeks)

The Oak Creek Parks & Recreation Department is offering a youth wrestling program to promote & teach amateur wrestling fundamentals & sportsmanship.



DATE: Fridays, begins Feb. 4 thru April 1

GRADE	TIMES	ACTIVITY / SECT. #
1-3	6 - 7 PM	404008 A1
4-8	7:15 - 8:15 PM	404008 B1

PLACE: Oak Creek Sr. High Wrestling Rm.

ENTER: Use east entrance #21 ONLY

INSTRUCTOR: David Hampson

FEE: \$16 resident / \$24 non-resident

NO CLASS March 25, 2005



BEGINNER TENNIS INSTRUCTION

Ages 8 & Up

Begins April 23 (5 weeks)

Balls will be provided by the department. Tennis racquets will be available for use during class time.

ACT/SECT#	DAY	AGES	TIME
104007 A1	Sat	8-12	10 AM - 11 AM
104007 A2	Sat	8-12	11 AM - 12 NN
104007 B1	Sat	12 +	12 NN - 1 PM

PLACE: Oak Leaf Tennis Courts

INSTRUCTOR: Dave Larson

FEE: \$ 12 Residents / \$ 18 Non-Residents

ADULT GOLF & TENNIS INSTRUCTION

SEE PAGE 38

YOUTH GOLF INSTRUCTION

AGES 11 - 16 (4 weeks)



Beginner golf instruction is available to youth ages 11-16 wanting to learn the fundamentals of this great sport. Instructor will cover equipment & basic skills focusing on swing, stance & golf terms. Participants using their own clubs should bring a #7 iron to the first class.

ACT/SECT#	DAY	START DATES	TIME
104004 A1	Mon	April 25	4 - 5 PM
104004 A2	Wed	April 27	4 - 5 PM

PLACE: Gastrau Golf Center, 1300 E. Rawson Avenue, Oak Creek

INSTRUCTORS: Steve Gastrau

FEE: \$12 residents / \$18 Non-residents

NOTE: A bucket of driving range practice ball must be purchased at each class.



When Marcus wanted to share a family tradition, fun was really good bait.

Want to teach a kid to appreciate a healthy lifestyle, new sports, and the great outdoors? It starts in parks. For generations, America has turned to public parks for fun, fitness, and family get-togethers. Good health and thriving park and recreation facilities stand in hand.

So get active, volunteer, and support funding for parks and recreation. Make an investment that improves your health and your happiness - for a lifetime. It starts in parks!

Go to www.mpa.org now to find out how you can make a difference!

It Starts in Parks
National Recreation and Park Association

TEEN ACTIVITIES

RED CROSS BABYSITTING COURSE

AGES 11 & UP



The Red Cross Babysitting Course helps you learn the responsibilities of a baby-sitter. Topics include: safety, supervision and basic care of children.

Attendance at all class sessions & completion of all written assignments & skills is required to receive certification.

Sat. January 29

8 AM-2:30 PM

ACTIVITY/SECT.#: 404001 A1

PLACE: City Hall-Lower Level Conference Room

ENTER: Use east entrance to City Hall--all others will be locked!

BRING: bag lunch/beverage and pencil/pen

INSTRUCTOR: June VanPinsker

OR

Sat. April 23

8 AM-2:30 PM

ACTIVITY/SECT.#: 104001 A1

PLACE: City Hall-Lower Level Conference Room

ENTER: Use east entrance to City Hall--all others will be locked!

BRING: bag lunch/beverage & pencil/pen

INSTRUCTOR: June VanPinsker

OR

Wed. March 16 & Wed. March 23

6 PM to 9 PM

ACTIVITY/SECT.#: 104001 A2

PLACE: City Hall-Lower Level Conference Room

ENTER: Use east entrance to City Hall--all others will be locked!

BRING: pencil/pen

INSTRUCTOR: Sue Stadler

FEE (includes book): Residents \$33.00

Non-resident \$49.50

NO REFUNDS ONCE CLASS BEGINS!



TEEN OPEN BASKETBALL

AGES 11-15



DAY TIME
Sunday 1 - 3 PM

BEGINS
January 9**

PLACE: West Middle School Gym

ENTER: Southwest doors at back of school by dumpsters

FEE PAID AT THE DOOR PER SESSION:

\$1 Residents with ID

\$2 Non-resident

Residents must have identification available when arriving.

****Will continue until March 20 IF attendance is good. Please call the activity tape at 299-9721, Press 1. Season may be shortened if participation is low.**



MIDDLE SCHOOL VOLLEYBALL

BOYS & GIRLS IN GRADES 6, 7 & 8

Don't miss the fun! Volleyball information will be available beginning Monday, February 7, 2005. Flyers will be available at the middle school & the Parks & Recreation office. Games are scheduled for **one evening per week** beginning mid-March, at East Middle School. Registration is limited--be sure to listen for announcements!

Activity/Section #: 109012 A1

FLYERS AVAILABLE: Mon. February 7, 2005 at Parks & Rec office and the middle schools

PLACE: East Middle School

Coordinator: Lindsay Allard



MAD SCIENCE

JUNIOR ENGINEERS: Grades K - 5

****Super Saturday-Sat. February 5**

****Includes all 3 classes--**



• **SUPER STRUCTURES:** Discover the strengths of triangles, cylinders and arches. Learn how combinations of these shapes make sturdy homes and sky-scrappers. Use teamwork to build your own super structures as well as an earthquake-proof building.

• **“FUN”DAMENTAL FORCES:** Gravity, Inertia, Centripetal force. Who could ever imagine that an introduction to physics could be so much fun? We’ll experiment with these awesome forces and building some cool devices to watch them at work.

• **UNDER PRESSURE:** Join Bernoulli and Newton as we take this exciting look at the science behind aerodynamics and the properties of air under pressure. Use a vortex generator to create air pockets with a punch, and levitate ping-pong balls in defiance of gravity.

Activity/Section: 406013 A3

TIME: 9 - 11:45 a.m.

PLACE: Sr. High Art Room

ENTER: Use east entrance only #21 only

FEE: Residents \$29 / Non-residents \$32

**NO REFUNDS
after JAN.28**

THE “WRIGHT” STUFF: Grades K-5

****Super Saturday-Sat. February 19**

**** Includes both classes--**

• **STUNT PLANES & GLIDERS:**

The Wright Brothers would be proud as we follow in their footsteps and learn the fundamental principles of flight. Fly through the basics of flight and aerodynamics. Build a football glider, learn about control surfaces and build your very own loop flying stunt plane. You’ll be the Top Gun after this class.



• **SPACE:** Take an exciting mission with Mad Science and explore the planets, moons and stars. See how asteroids and comets are formed. (Space suit not required).

Activity/Section: 406013 A4

TIME: 9 a.m. - 11:45 a.m.

PLACE: Sr. High Art Room

ENTER: Use east entrance only #21 only

FEE: Residents \$29 / Non-residents \$32

**NO REFUNDS
after FEB. 11**

DETECTIVE SCIENCE: Grades K - 5

Saturday, February 12, 2005

DETECTIVE SCIENCE: Discover how science is used to solve real crimes. Watch as the room is transformed into a crime lab for this exploration into the fundamentals of forensics. Become a science sleuth as we discover how police use chemistry and our 5 senses to “clue in” at the crime scene...so much fun, it’s criminal!



<u>Grade</u>	<u>Time:</u>	<u>Activity/Section</u>
K-2	8:30-10:15 a.m.	406013 C1
3 - 5	10:30-12:15 p.m.	406013 C2

PLACE: Sr. High Art Room

ENTER: Use east entrance only #21 only

FEE: Residents \$23 / Non-residents \$26

**NO REFUNDS
after FEB.4**

SCIENCE OF MAGIC: Grades K - 5

Saturday, February 26, 2005

SCIENCE OF MAGIC: How did they do it? Magic? No-it’s science. It was the clever application of scientific knowledge and known phenomena. You’ll learn the secrets behind the famous magic tricks that you can recreate for yourself.



<u>Grade</u>	<u>Time:</u>	<u>Activity/Section</u>
K-2	8:30-10:15 a.m.	406013 C3
3 - 5	10:30-12:15 p.m.	406013 C4

PLACE: Sr. High Art Room

ENTER: Use east entrance only #21 only

FEE: Residents \$23 / Non-residents \$26

**NO REFUNDS
after FEB. 18**



GOLF (4 CLASSES)

ADULTS & YOUTH AGE 16+

BEGINNER LESSONS

Take a swing & join the fun! Learn basic golf fundamentals focusing on proper grip, stance and swing. You'll have plenty of opportunities to hit balls. Participants using their own clubs should bring a #7 iron to the first class.

Session 1 - Mondays begins April 25

DAY	TIME	ACTIVITY/SECTION#
Mon	5-6 PM	106504 A1
Mon	6-7 PM	106504 A2

Session 2 - Wednesdays begins April 27

DAY	TIME	ACTIVITY/SECTION#
Wed	5-6 PM	106504 B1
Wed	6-7 PM	106504 B2

INTERMEDIATE - ADVANCED LESSONS

This class is geared toward the person who is scoring in the low 50's or high 40's for 9 holes. Emphasis will be placed on improving fundamentals, specialty shots & course management.

Session 1 - Mondays begins April 25

DAY	TIME	ACTIVITY/SECTION#
Mon	7 - 8 PM	106514 A1

Session 2 - Wednesdays begins April 27

DAY	TIME	ACTIVITY/SECTION#
Wed	7 - 8 PM	106514 B1

PLACE: Gastrau Golf Center
1300 E. Rawson Avenue, Oak Creek

INSTRUCTORS: Steve Gastrau & Dennis Murawski

FEE PER SECTION: \$28 residents *
\$42 non-residents*

* **Note:** A bucket of driving range practice balls must be purchased at each class.

Scuba Diving, Ski & Snowboard Lessons, Step Up Aerobics, Aqua Fit, & more . . .

ADULT SOFTBALL LEAGUES 14 GAME SEASON

Begins: Week of April 25, 2005

Team entry fee: \$165 for outseam
\$185 for inseam
Player Fee: \$13.50 per player



RESIDENT TEAM PLAYER ELIGIBILITY:

* Resident teams must consist of a minimum of 51% residents of Oak Creek

LEAGUES

LOCATION

MONDAY EVENINGS

Men's Recreation-Inseam East Middle School Field
Women's Recreation-Inseam Shepard Hills West Field

WEDNESDAY EVENINGS

Men's Open-Inseam East Middle School Field

THURSDAY EVENINGS

Men's Gold-Inseam East Middle School Field

FRIDAY EVENINGS

Adult Co-rec-Outseam Shepard Hills West Field

Complete eligibility policies and procedures are contained in team packets. Please call for details.

RETURNING RESIDENT TEAM REGISTRATION begins Monday, February 7 (51% residents at end of 2004 season)

NEW RESIDENT TEAMS: Mon., Feb. 14, 2005

NON-RESIDENT TEAMS: call the Recreation Office at 768-6515 for the registration date or for further information.

TENNIS INSTRUCTION (5 CLASSES)

ADULTS & YOUTH AGE 16+

Tennis instruction is being offered for adults. Racquets will be available for use during classes. Balls are provided.



DAY	STARTS	TIME	ACTIVITY/SECTION#
Sat	April 23	9 - 10 AM	106507 A1

PLACE: Oak Leaf Tennis Courts
FEE: \$20 Residents/ \$30 Non-residents

INSTRUCTOR: Dave Larson

THE SPORTS PAGE

OPEN BASKETBALL PROGRAM-18+

DAY	TIME	AGE(S)	BEGINS / ENDS
Sunday	6-7:30 PM	35 & Up	Jan. 9-Mar. 27
Sunday	7:30-9 PM	18 & Up	Jan. 9-Mar. 27

PLACE: West Middle School Gym

ENTER: Southwest doors at back of school by dumpster

FEE PAID AT THE DOOR PER SESSION:

- \$2 Residents with ID
- \$3 Non-residents

Residents must have identification available when arriving.



OPEN WEIGHTLIFTING-18+

The Oak Creek Sr. High Weight Room will be open & supervised for adults. Those who are unfamiliar with the equipment should ask the supervisor for an orientation to the weight room.

DAY	TIME	BEGINS / ENDS
Mon & Wed	6:30 - 8:00 PM	Jan. 17 - March 30

PLACE: Sr. High Weight Room

ENTER: Use East #21 Entrance Only

FEE PAID AT THE DOOR PER SESSION:

- \$2 Residents with ID
- \$3 Non-residents

Residents must have identification available when arriving. Call the activity tape at 299-9721, Press 1. Season may be shortened if participation is low.



We're Sorry: Children are not allowed to attend adult classes/activities! As much as we love them, we have found that adult classes/activities are too long for children to wait quietly & they often cause disruptions in class. Please make other arrangements for their care while you are enjoying your class/activity.

Oak Creek Education Association

Teachers working to make the schools in Oak Creek-**Great!**



Every kid deserves one!

WINTER FUN

OAK CREEK DAY AT CRYSTAL RIDGE

Friday, January 21, from 4:30 PM to 10 PM

will be Oak Creek Day at the Crystal Ridge Ski area. Any Oak Creek resident **WITH I.D.** will be given the low group rate for lift and rental equipment during regular hours. Bring your friends and family and plan on having a great time. **All skiers under 18 years of age must have a parent or guardian sign a consent form which is available in the Recreation Office or at Crystal Ridge prior to skiing.



For more information call:

Crystal Ridge at 529-7676

PLACE: Crystal Ridge Ski Area (76th St. & Rawson Ave.) One mile south of Southridge

COST: \$15 for lift / \$19 for lift/rental

Fee is paid at Crystal Ridge upon arrival

SKI LESSONS

(AGES 10 TO ADULT)

Oak Creek Parks & Recreation is teaming up with Crystal Ridge Ski area to offer ski lessons this winter. A great opportunity for the whole family to enjoy our Wisconsin winters together. Fee includes lift and 1 hour lesson & rental.

<u>Day</u>	<u>Dates</u>	<u>Activity / Section #</u>
Tues	Jan 4, 11 & 18	403501 A1
OR		
Thurs	Jan 6, 13 & 20	403501 A2

TIME: Check in at 6 PM / Lessons at 6:30 PM

PLACE: Crystal Ridge Ski Area (76th St. & Rawson Ave.); one mile south of Southridge

*FEE: \$65 (*fee includes three lessons)

SNOWBOARD LESSONS

(AGES 14 TO ADULT)

Oak Creek Parks & Recreation is teaming up with Crystal Ridge Ski area to offer snowboard lessons this winter. A great opportunity for the whole family to enjoy our Wisconsin winters together. Fee includes lift / 1 hour lesson & rental.



<u>Day</u>	<u>Dates</u>	<u>Activity / Section #</u>
Tues	Jan 4, 11 & 18	403503 A1
OR		
Thur	Jan 6, 13 & 20	403503 A2

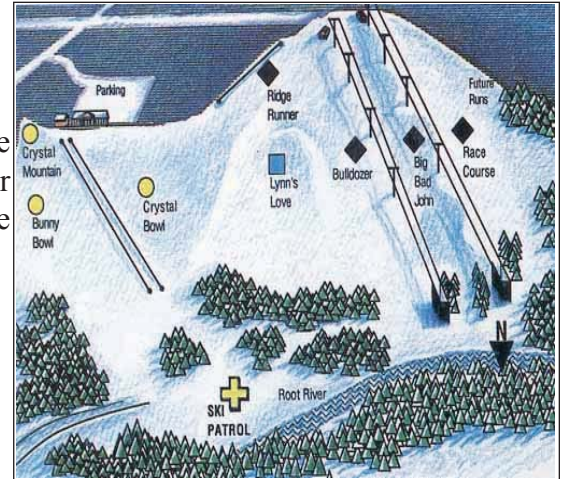
TIME: Check in at 6 PM / Lessons at 6:30 PM

PLACE: Crystal Ridge Ski Area (76th St. & Rawson Ave.) One mile south of Southridge

*FEE: \$90 (*fee includes three lessons),

Registration opens immediately

NO REFUNDS



Registration opens immediately

NO REFUNDS

See page 41 for sledding locations and ice rink information.

SLEDDING & ICE RINK INFORMATION

SLEDDING LOCATIONS



Tobogganing and sledding are offered at these parks during daylight hours and only when weather conditions are good. There is no supervision at any of these areas.

- Chapel Hills Park
- Manor Marquette Park
- Riverton Meadows Park
- Willow Heights Park



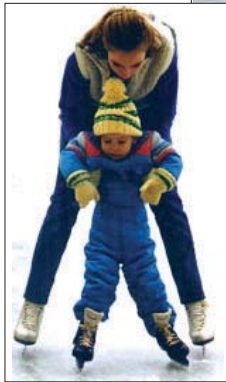
See map on page 14-15 for park locations

HENRY MILLER PARK ICE RINK

HENRY MILLER PARK ICE RINK AND SHELTER will be opened as soon as safe skating is established. The Henry Miller Park shelter will be open during those times when the ice is supervised. Hot chocolate will be sold during supervised hours. Unsupervised ice skating is available at Henry Miller Park during daylight hours when the weather and ice conditions permit.

NOTE: Supervised ice skating hours are subject to staff availability and ice and weather conditions. **Please call the activity tape at (414) 299-9721, Press 1, after December 15th for current ice rink schedule.**

HENRY MILLER PARK ICE RINK & SHELTER can be reserved by an group, club or organization during non-skating hours. **For permit and/or additional ice skating information, contact the Recreation Office at 768-6515.** See page 16 for shelter rental fees.



Some pictures are from an Ice Skating Party rental at Henry Miller Park Ice Rink

REGISTRATION MADE EASY!



RESIDENT REGISTRATION

IMMEDIATELY:

MAIL, FAX or DROP OFF your registration!

Jan. 5 ALL registrations received in the office by mail, drop-box or fax will be shuffled & processed at random beginning at 1 PM. Any registrations received after that time will be processed at random beginning **January 10** with walk-in registration.

Jan. 10 Oak Creek resident walk-in registration

Jan. 17 Phone-in & non-resident registration accepted. MasterCard or Visa only

Don't wait! Some classes fill before walk-in, phone & non-resident registrations begin.

Drop boxes located at:

East & south entrances to City Hall
East end of City Hall parking lot



Mail to:

Oak Creek Parks, Recreation & Forestry
8640 S. Howell Ave.,
Oak Creek, WI 53154

Fax to: (414) 768-6518

Credit card info, proof of residency & date of birth must be included with fax-in registrations

NOTES:

- Receipts will be mailed or given to all registrants! Please check them carefully!
- You **WILL** be notified if your class is filled
- The Department is not responsible for registrations not received due to missing or improper labels, postage, etc.
- Cash, check, VISA & MasterCard are accepted for payment.
- A \$3 service fee will be charged on refunds & transfers.
- Instructors will not accept registration and or payment at class site.

WAITING LISTS

- If the class you want to register for is filled or does not meet at a time or date you can attend, be sure your name is put on a waiting list.
- Waiting lists do not carry over from one season to the next.
- We will call off the wait list until 1/3 of the class has been completed.

COMING SOON !!! WEBTRAC ON-LINE REGISTRATION

Check our webpage beginning in Spring 2005 for details on how you can take advantage of this convenient registration option.

www.oakcreekwi.org

click on city departments, then Parks & Recreation

PROOF OF RESIDENCY & DATE OF BIRTH REQUIREMENTS:

- Any child who does not attend the Oak Creek-Franklin public schools is required to show proof of their date of birth at their first registration **after March 15, 2004.**
- If the child's name does not match the parent who is presenting proof of residency, proof of residency will be required for the child.
- Proof of residency for all Oak Creek residents is required at time of each registration

QUESTIONS/CLARIFICATION?
(414) 768-6515

AM I A RESIDENT?

The non-resident fee applies to any person whose primary residence is not within the Oak Creek city limits at the time of registration. Attendance in the Oak Creek-Franklin School District does not constitute residency. All persons registering for activities must show proof of current City residency. If proof of residency cannot be validated, the non-resident fee will apply.

PARKS, RECREATION & FORESTRY OFFICE

HOURS: MONDAY - FRIDAY 8 AM - 4:45 PM
OFFICE(414) 768-6515

24 HR. ACTIVITY INFORMATION TAPE.....(414) 299-9721
Press 1 for General Information
Press 2 for Team Sports Information
Press 3 for Registration Information

FAX.....(414) 768-6518

WEB: www.oakcreekwi.org

RECREATION ACTIVITY REGISTRATION FORM ~ PLEASE PRINT CLEARLY ~

FIRST / LAST NAME (parent/guardian) _____
 HOME PHONE () _____ WORK PHONE () _____ Mom's or Dad's
 CELL PHONE (Mom) () _____ CELL PHONE (Dad) () _____
 ADDRESS _____ CITY _____ ZIP _____
 E-MAIL ADDRESS _____ Check if this is new address, phone, name change, etc.

EMERGENCY CONTACT (if different from above) Name: _____ Relationship to Participant: _____

home# _____ work #: _____ cell #: _____

PARTICIPANTS' FIRST / LAST NAME	SEX	DATE OF BIRTH**	GRADE <small>2004-2008</small>	CHOICE	PROGRAM TITLE / LEVEL / SESSION	REQUIRED--		FEE
						ACTIVITY #	SECTION #	
				1ST				
				ALT.				
				1ST				
				ALT.				
				1ST				
				ALT.				
				1ST				
				ALT.				

Special Considerations: (i.e. medication, disability needs, etc.) _____ **TOTAL FEES:** _____

ALL REGISTRATIONS must include proof of residency (current address on check, driver's license, utility bill, magazine label, lease, etc) **AND **proof of date of birth** (birth certificate, church records, etc.) **See Page 42 for details.**

VISA MC **Account #:** _____ **Exp. Date:** _____

Signature _____

WAIVER OF LIABILITY

I understand that the Oak Creek Parks, Recreation & Forestry Department does not assume liability for payment of medical-hospital expenses which may be incurred by myself while participating in this activity, but said liability will be assumed by myself for the duration of the activity. Further, I understand that the School District in which these activities may be conducted does not assume liability for payment of medical-hospital expenses incurred in the activity sponsored by the Oak Creek Parks, Recreation & Forestry Department of the City of Oak Creek, Wisconsin. Participants who do not have medical-hospital insurance coverage are encouraged to purchase this coverage from their own insurance agent for the duration of the activity.

I HAVE READ & FULLY UNDERSTAND THE ABOVE WAIVER OF LIABILITY STATEMENT.

SIGNED _____ **DATE** _____

CHECK PAYABLE TO: OCPRF or OAK CREEK PARKS, REC. & FORESTRY

FAX TO: (414) 768-6518

MAIL TO: OAK CREEK PARKS, REC. & FORESTRY • 8640 S. HOWELL AVENUE • OAK CREEK, WI 53154

<p>OFFICE USE ONLY: NEED HAVE PROOF _____ DOB _____ _____ RESIDENCY _____ _____ CHILD RES. _____ RECEIPT #: _____ DATE: _____ INITIALS: _____</p>	<p>OFFICE NOTES: _____ _____ _____ _____ _____</p>
---	--

FEEL FREE TO PHOTOCOPY THIS PAGE IF YOU NEED MORE ROOM OR ANOTHER REGISTRATION FORM

Here's your chance to make any comments/suggestions. Don't hold anything back!
We're always looking to improve programs & offer new classes.



.....

.....

.....

.....

.....

.....

Optional: Please call me concerning these suggestions / comments. yes no

Name: _____ Day Phone # (8 AM-4:30 PM) _____

E-mail address: _____

Looking for a part-time job? Begin the application process here! We may be interested in offering a class or program, but haven't found an instructor!

Name: _____ Phone: _____

Address: _____

Your Age Bracket: (circle one) 14-15 yrs. 16-17 yrs. 18 & older

Position Applied For: _____ E-mail address: _____

Return with your registration, fax, mail or drop it off at:
Oak Creek Parks, Recreation & Forestry Department
8640 S. Howell Ave, Oak Creek, WI 53154
FAX to (414) 768-6518

Thank You!



HELP KEEP YOUR COMMUNITY
SAFE FROM VANDALISM

Report vandalism & graffiti to the
Oak Creek Police Department
762-8200

(or **911** if the vandalism is in progress)

Vandalism & Graffiti

- Know why vandalism happens, who's involved & what you can do to help prevent it.
- Report vandalism when you see it happening.
- Join in community efforts to stop vandalism.

LET'S KEEP OUR PARKS FREE OF VANDALISM & GRAFFITI!

RECREATION ACTIVITY REGISTRATION FORM ~ PLEASE PRINT CLEARLY ~

FIRST / LAST NAME (parent/guardian) _____
 HOME PHONE () _____ WORK PHONE () _____ Mom's or Dad's
 CELL PHONE (Mom) () _____ CELL PHONE (Dad) () _____
 ADDRESS _____ CITY _____ ZIP _____
 E-MAIL ADDRESS _____ Check if this is new address, phone, name change, etc.

EMERGENCY CONTACT (if different from above) Name: _____ Relationship to Participant: _____

home# _____ work #: _____ cell #: _____

PARTICIPANTS' FIRST / LAST NAME	SEX	DATE OF BIRTH**	GRADE <small>2004-2005</small>	CHOICE	PROGRAM TITLE / LEVEL / SESSION	REQUIRED--		FEE
						ACTIVITY #	SECTION #	
				1ST				
				ALT.				
				1ST				
				ALT.				
				1ST				
				ALT.				
				1ST				
				ALT.				

Special Considerations: (i.e. medication, disability needs, etc.) _____ **TOTAL FEES:** _____

ALL REGISTRATIONS must include proof of residency (current address on check, driver's license, utility bill, magazine label, lease, etc) **AND **proof of date of birth** (birth certificate, church records, etc.) [See Page 42 for details.](#)

VISA MC **Account #:** _____ **Exp. Date:** _____

Signature _____

WAIVER OF LIABILITY

I understand that the Oak Creek Parks, Recreation & Forestry Department does not assume liability for payment of medical-hospital expenses which may be incurred by myself while participating in this activity, but said liability will be assumed by myself for the duration of the activity. Further, I understand that the School District in which these activities may be conducted does not assume liability for payment of medical-hospital expenses incurred in the activity sponsored by the Oak Creek Parks, Recreation & Forestry Department of the City of Oak Creek, Wisconsin. Participants who do not have medical-hospital insurance coverage are encouraged to purchase this coverage from their own insurance agent for the duration of the activity.

I HAVE READ & FULLY UNDERSTAND THE ABOVE WAIVER OF LIABILITY STATEMENT.

SIGNED _____ **DATE** _____

CHECK PAYABLE TO: OCPRF or OAK CREEK PARKS, REC. & FORESTRY
FAX TO: (414) 768-6518
MAIL TO: OAK CREEK PARKS, REC. & FORESTRY • 8640 S. HOWELL AVENUE • OAK CREEK, WI 53154

<p>OFFICE USE ONLY: NEED HAVE PROOF _____ DOB _____ _____ RESIDENCY _____ _____ CHILD RES. _____ RECEIPT #: _____ DATE: _____ INITIALS: _____</p>	<p>OFFICE NOTES: _____ _____ _____ _____ _____</p>
--	--

FEEL FREE TO PHOTOCOPY THIS PAGE IF YOU NEED MORE ROOM OR ANOTHER REGISTRATION FORM

REGISTRATION FORM

Here's your chance to make any comments/suggestions. Don't hold anything back!
We're always looking to improve programs & offer new classes.

.....

Optional: Please call me concerning these suggestions / comments. ___ yes ___ no

Name: _____ Day Phone # (8 AM-4:30 PM) _____

E-mail address: _____

Looking for a part-time job? Begin the application process here! We may be interested in offering a class or program, but haven't found an instructor!

Name: _____ Day Time Phone: _____

Address: _____

Your Age Bracket: (circle one) 14-15 yrs. 16-17 yrs. 18 & older

Position Applied For: _____ E-mail address: _____

Return with your registration, fax, mail or drop it off at:
Oak Creek Parks, Recreation & Forestry Department
 8640 S. Howell Ave, Oak Creek, WI 53154
 FAX to (414) 768-6518





Fitness Walking , Fit for the 50's,
 Walk it Off, Yoga,
YOU CAN: Steps to Healthier Aging
 Stepping Up Aerobics,
 Mother Daughter Aerobics, Aqua Fit

SPRING PREVIEW

Program Coordinator: John Keane

REGISTRATION: DO NOT REGISTER NOW! Flyers will be available at the Recreation Office and will be distributed to local elementary and middle school the **FIRST PART OF APRIL 2005.**

TEE BALL PROGRAM

YOUTH AGES 4 1/2 BY APRIL 1, 2005 THROUGH GRADE 1 ARE ELIGIBLE TO PARTICIPATE

BEGINS: Week of June 13

PLACE: Senior High Ballfields

AM TEE BALL PROGRAM (M/W or Tu/Th)

TIME: 9 AM - 10:15 AM

EVENING T-BALL PROGRAM (M/W or Tu/Th)

TIME: 6 PM - 7:15 PM, Same dates as day program

ROOKIE BALL

(UMPIRES PITCH)

BOYS & GIRLS IN GRADES 1, 2 & 3

BEGINS: Monday through Thursday, June 13 - 16

TIME: 10:30 - 11:45 AM

PLACE: Senior High Ballfields

PRACTICES/GAMES

- Begin the week of June 20
- Mondays thru Thursdays daily

ELEMENTARY BASEBALL PROGRAM

BOYS & GIRLS IN GRADES 3, 4, 5 & 6

BEGINS: Monday through Thursday, June 13 - 16

TIME: 1:00 PM - 2:30 PM

PLACE: Senior High Ballfields

ELEMENTARY GIRLS SOFTBALL PROGRAM

GIRLS IN GRADES 3, 4, 5 & 6

BEGINS: Monday through Thursday, June 13 - 16

TIME: 2:45 PM - 4:00 PM

PLACE: Senior High Ballfields



CITY PHONE DIRECTORY

Administrator's Office	768-6591
Assessor	768-6506
City Clerk	768-6500
TDD Telephone	768-6513
Engineering	768-6541
Fire (Non-Emergency)	570-5630
General Information	768-6500
Health	768-6525
Inspection	768-6547
Library	764-4400
Mayor	768-6548
Planning	768-6527
Police	762-8200
Open Records Requests	766-7658
Municipal Court	766-7621
Parks, Recreation & Forestry	768-6515
24 Hr. Activity Tape	299-9721
Fax	768-6518
Forestry	768-5861
Forever Young Club	768-5850
Streets	768-6552
Treasurer	768-6501

UTILITY DIRECTORY

Water Utility	570-8210
Emergency	768-7060
Ameritech Repair	1-888-611-2344
Wisconsin Electric	221-3333
Wisconsin Natural Gas	1-800-236-9874

RECREATION HELP WANTED

WINTER/SPRING:

- * Lifeguards
- * Swim Instructors
- * Tumbling Instructor
- * Art/Craft Instructor
- * Summer part-time maintenance laborers
- * Are you interested in teaching a class or program?
See Page 46 and fill out the mini-application form.

NEW PROGRAMS THIS WINTER/SPRING!

- Yoga (ages 16+)
- Walk It Off
- Gymboree
- Lap Swimming
- Detective Science
- Junior Engineers
- Hip Hop Dance
- The Wright Stuff
- Science of Magic
- YOU CAN!-Steps to Healthier Aging

Keep this guide for future reference! **Winter & Spring 2005 information enclosed**

CITY OF OAK CREEK

Acorn Recreation Guide and City Newsletter

* January * February. * March * April 2005

PRSRT STD U.S. POSTAGE PAID OAK CREEK, WI PERMIT #11

Visit the City of Oak Creek website at: www.oakcreekwi.org